

## Model RP Reduced Pressure Principle 2-1/2" to 10"

### FEATURES

- All seats are replaceable
- Springs are not contained
- Double external RV sensing lines
- Detachable RV assembly
- 2" model has bronze body
- 2-1/2" to 10" have fused epoxy coated body

### DESCRIPTION

The Cla-Val Model RP Backflow Preventer protects potable water lines against contamination. This assembly combines protection against backflow with exceptionally low head loss characteristics.

The Model RP consists of two independently acting toggle lever check valves, an automatic pressure differential relief valve located between the two check valves, two gate valves and four test cocks.

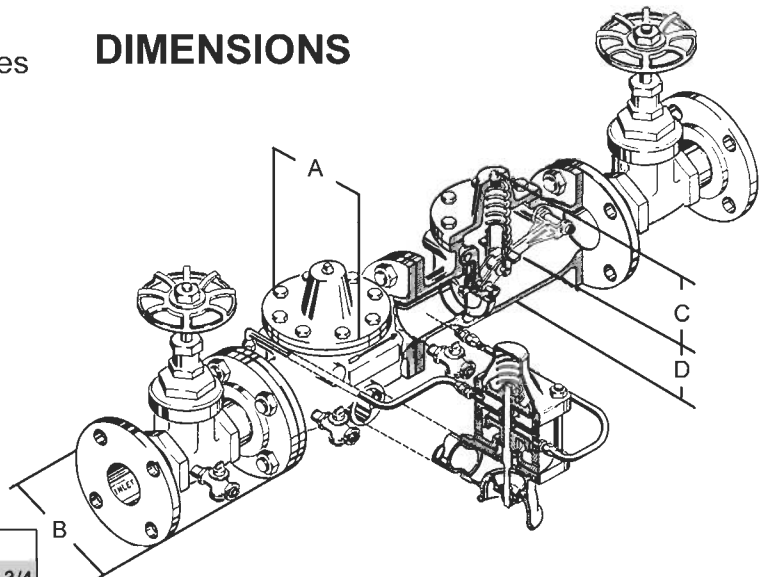
### OPERATION

Under a normal flow condition, both check valves are open and the pressure differential relief valve is closed. During normal flow and at the cessation of flow, the pressure in the zone between the two check valves is maintained at least 2 psi less than the supply pressure by the pressure differential relief valve.



Under a no flow condition, both check valves are closed. When supply pressure drops to 2 psi above the "zone" pressure, then the relief valve discharges as necessary to maintain the "zone" pressure at 2 psi below supply pressure. When supply pressure drops below 2 psi above the "zone" pressure, the relief valve opens fully.

### DIMENSIONS



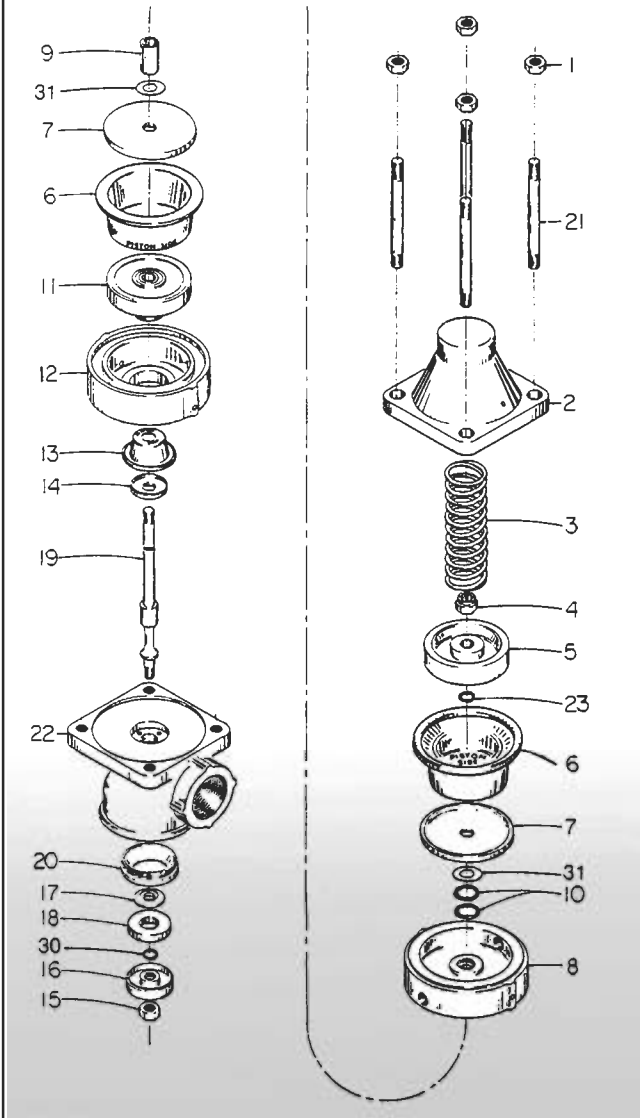
**This backflow device was made from 1958 to 1978. If you need parts, call us at 1-800-66BKFLO!**



	2	2-1/2	3	4	6	8	10
A	10	13-1/2	13	15	20	25-3/8	29-3/4
B	5-1/2	6-1/2	6-1/2	8-5/8	9-3/4	9-3/4	15-1/8
C	5-1/4	7-1/4	7-1/4	8-5/16	11	13	15-3/4
D	1-7/8	3-5/16	3-5/16	3-3/8	4-9/16	5-11/16	8

# Model RP

## CDHS-14: Pressure Differential Relief Valve



### PARTS LIST

ITEM NO.	DESCRIPTION
1	STUD NUTS
2	VALVE COVER
3	SPRING
4	STEM NUT
5	UPPER PISTON
6	LARGE DIAPHRAGM
7	LARGE DIAPHRAGM RETAINER
8	INTERMEDIATE PLATE
9	SPACER
10	"O" RING
11	LOWER PISTON
12	CYLINDER
13	SMALL DIAPHRAGM
14	SMALL DIAPHRAGM RETAINER
15	STEM NUT
16	DISC RETAINER
17	DISC GUIDE
18	DISC
19	STEM
20	SEAT
21	STUDS
22	BODY
23	"O" RING
30	"O" RING
31	GASKET

	SIZE		ITEM#
Relief Valve	1"	CDHS-14, for use on all 2" & 2-1/2" Model RP*	81326B
Repair Kits	1-1/4"	CDHS-14, for use on all 3" Model RP*	81327K
	2"	CDHS-14, for use on all 4" to 10" Model RP*	81328H

\* Unless converted to CDHS-20.

## 3081 / 3081EX Check Valve Repair Kits

(Valve is used on all RPs, Ds, 16s, 18s & 27s)

SIZE	ITEM#
2"	81319G (10826B*)
2-1/2"	81320E
3"	81321E
4"	81322A (10863K*)
6"	81323J (10864H*)
8"	81324G (10865E*)
10"	81325D

\* Order part # in paranthesis if the serial # of valve begins with the following: XA - XL, YA - YL, ZA - ZL, AM - AX, BM - MX, CM - CX, DM - DX, EM - EX, FM - FX, GM - GX

For a listing of check valve parts, see Model RP-1

**Note:** When inquiring about parts, specify serial number of assembly, unit pipe size, and all name plate data.