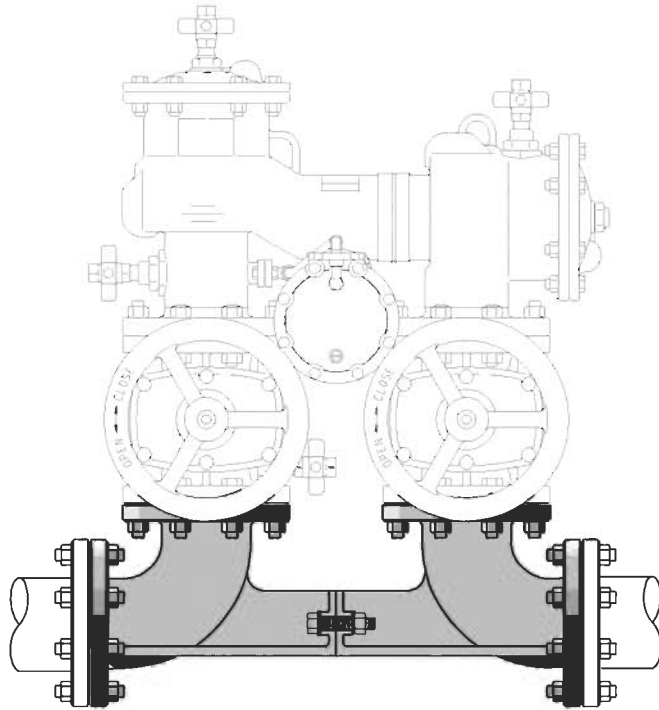




Model VS-FF FF x FF Valve Setter 2-1/2" to 10"



Material Specifications

Part	Material
Body	Ductile iron A536 GR 65-45-12
Coating	Fusion epoxy coated internal and external AWWA C550
Bolts & Nuts	Plated Steel

* Flange bolts and gaskets are not included (except for center joint).



Flange by Flange Valve Setter

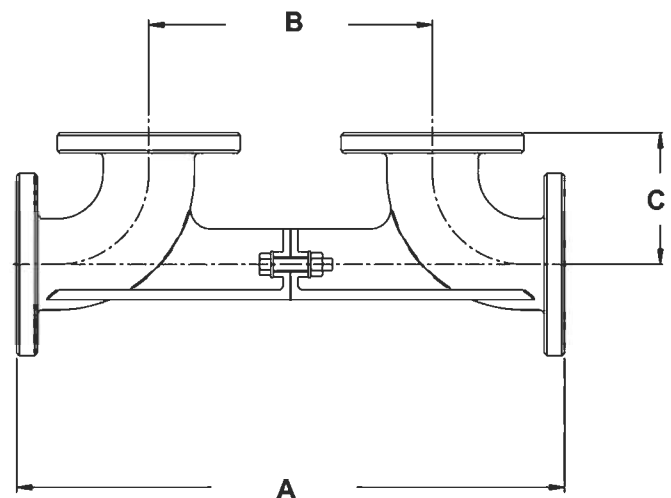
Model VS-FF flange by flange valve setter is made of fusion epoxy coated ductile iron. Valve setters are designed to augment the installation of the "N" series backflow prevention valves. Integral ductile iron support between elbows transfers thrust downstream, eliminating thrust block requirements between elbows.

Features

- Corrosion resistant fusion epoxy coated.
- Eliminates the need for thrust blocks or other restraints at the point of installation.
- Flanges:
 - ANSI B16.1 Class 125 (Standard)
 - ISO 7005-2 (Optional)
 - AS 2129 (Optional)

Ratings

Maximum Working Pressure	175 psi
Temperature Range	32° to 140°



Dimensions

Size	2 1/2"	3"	4"	6"	8"	10"
A in.	23 1/2"	23 1/2"	27"	32"	36 1/2"	43"
B in.	12 1/2"	12 1/2"	14"	16"	18 1/2"	21"
C in.	5 1/2"	5 1/2"	6 1/2"	8"	9"	11"
Weight lbs	73	73	100	144	228	310