

SERIES 40-200S Stainless Steel Reduced Pressure Principle 1/4" to 1"

OPERATION

During normal flow conditions, the two check valves supply water downstream. The relief valve is held shut by supply pressure in the internal sensing passage, on the relief valve diaphragm. The zone (area between the check valves) maintains pressure at approximately 7 psi lower than supply pressure. Should a back-pressure or back-siphonage condition occur, the second check valve will seal, prohibiting the backflow of water. Should the second check valve become fouled, the zone pressure will increase opening the differential relief valve to atmosphere. This maintains zone pressure at least 2 psi lower than supply.



FEATURES

- Stainless steel body and covers
- Easy to install and repair
- Internal sensing passage
- Low head loss
- Removable seat discs, replaceable seats
- Apollo® full port ball valves w/steel handles
- Maximum working pressure 175 psi
- Temperature range 33°F-180°F

DESCRIPTION

The Conbraco Series 40-200S Stainless Steel Reduced Pressure Principle Backflow Preventer is designed to give maximum protection against backflow caused by either back-pressure or back-siphonage from a cross-connection wherein a contaminant hazard exists (i.e. a health hazard), or a pollutant hazard exists (i.e. a non-health hazard). The assembly is composed of two spring-loaded poppet type check valves and a mechanically independent, hydraulically dependent pressure differential relief valve set in an integral stainless steel body. Three of the testcocks are mounted at the top to assure easy access during repair and maintenance when unit is installed in tight places.

APPROVALS

ASSE 1013, CSA B64.4 (1/2"-1"), UL Classified (3/4"-1") and USC's FCCC&HR.

MODELS

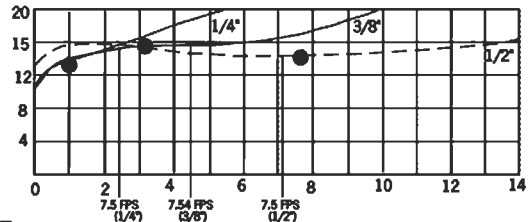
1/4"	40-201
3/8"	40-202
1/2"	40-203
3/4"	40-204
1"	40-205

Options (suffix): "-A1S" Less ball valves,
"-A2S" With ball valves.

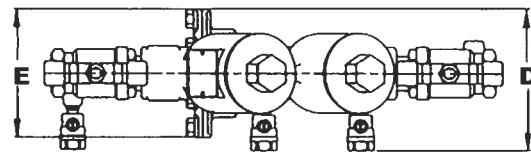
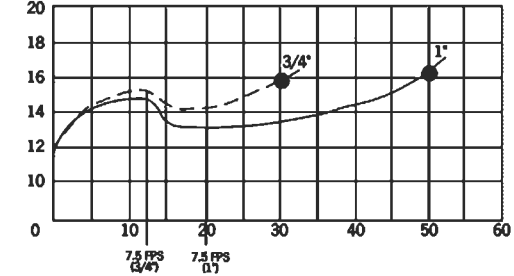
MATERIALS

Body	Stainless Steel
Springs	Stainless Steel
Fasteners	Stainless Steel
Poppets	Glass-filled Acetal
Seat discs	Silicone Rubber
Diaphragm & O-rings	FDA Viton
Replaceable seats	Glass-filled PPO

FLOW CURVES

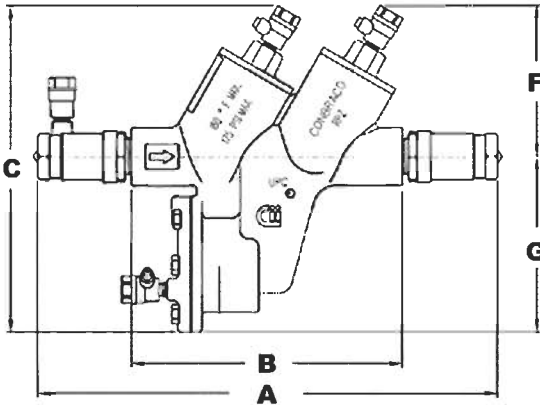


PRESSURE LOSS (PSI)



Body Size	1/4"	3/8"	1/2"	3/4"	1"
A	10-1/2	10-1/2	10-1/2	13-1/2	15-1/4
B	5-3/4	5-3/4	5-3/4	7-15/16	7-15/16
C	5-13/16	5-13/16	5-13/16	8-3/8	8-3/8
D	3-5/8	3-5/8	3-5/8	4-3/4	4-3/4
E	2-5/8	2-5/8	2-5/8	4	4
F	2-1/8	2-1/8	2-1/8	3-1/4	3-1/4
G	3-3/4	3-3/4	3-3/4	5-1/8	5-1/8
Test Cocks	1/8x1/4 NPT	1/8x1/4NPT	1/8x1/4NPT	1/8x1/4NPT	1/8x1/4NPT
Net Wgt. (w/o Ball Valves)	4-1/4	4-1/4	4-1/8	8-1/4	8-1/8
Net Wgt. (with Ball Valves)	5-1/2	5-1/2	5-3/8	10-3/4	11
Shipping Wgt. (w/o Ball Valves)	5-1/8	5-1/8	5	9-3/4	9-5/8
Shipping Wgt. (with Ball Valves)	6-3/8	6-3/8	6-1/4	12-1/4	12-3/4

DIMENSIONS



Repair Kits

Major Repair Kit 1/4", 3/8", 1/2" 3/4" & 1"
 4, 5, 6, 7 (2), 8, 9, 10 (2), 11, 12, 13 (2), 14, 18 (2), 19, 20, 21 (2), 22, 24 (2), 25 (2), 26, 27

Check Valve Repair Kit 40-003-A2S 40-004-A2S
 7, 10, 13, 18, 21, 24, 25

Relief Valve Repair Kit 40-003-A3S 40-004-A3S
 4, 5, 6, 8, 9, 11, 12, 14, 19, 20, 22, 26, 27

Rubber Repair Kit 40-003-A4S 40-004-A4S
 8, 9, 10 (2), 11, 12, 13 (2), 25 (2), 27

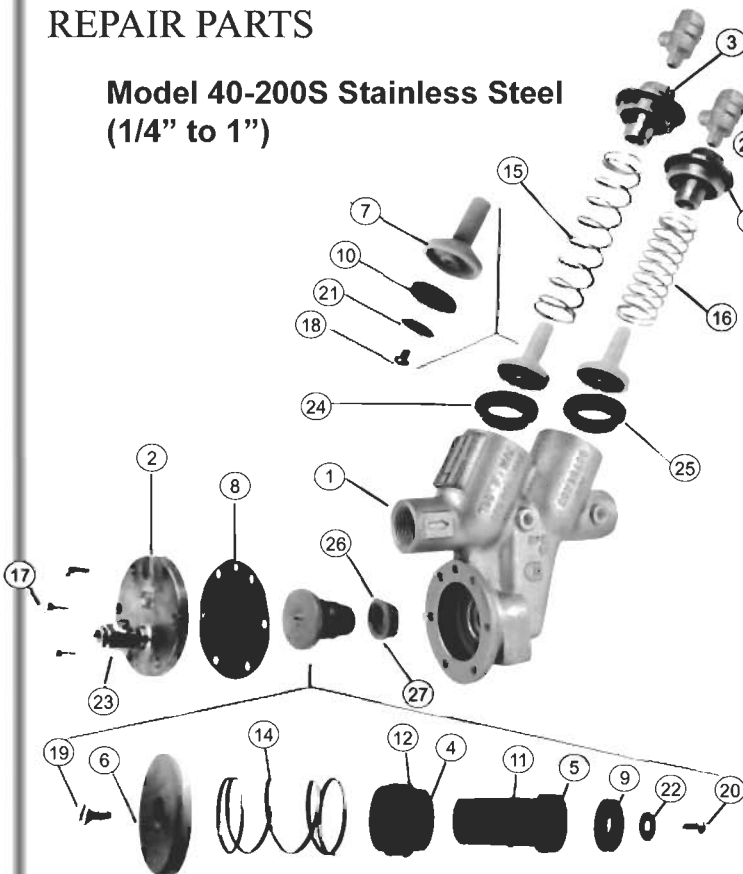
Replaceable Seat Kit 40-003-A7S 40-004-A7S
 24 (2), 25 (2), 26, 27

ITEM DESCRIPTION QTY

ITEM	DESCRIPTION	QTY	Call	Call
1	Body	1	Call	Call
2	R.V. Cover	1	F-3056-05	F-3048-05
3	Cap	2	F-3232-05	F-3233-05
4	R.V. Bushing	1	I-5149-15	I-5105-15
5	R.V. Stem	1	G-3296-00	G-3212-00
6	Diaphragm Plate	1	E-2222-00	D-2506-00
7	Poppet	2	K-3409-00	K-3362-00
8	R.V. Diaphragm	1	D-3088-00	D-3047-00
9	R.V. Seat Disc	1	D-2631-00	D-2829-00
10	Check Seat Disc	2	D-2630-00	D-2503-00
11	Stem O-Ring	1	D-3084-00	D-3051-00
12	Bushing O-Ring	1	D-3085-00	D-3044-00
13	Check Cap O-Ring	2	D-3083-00	D-3052-00
14	R.V. Spring	1	A-1795-00	A-1698-00
15	1st Check Spring	1	A-1797-00	A-1699-00
16	2nd Check Spring	1	A-1794-00	A-1700-00
17	Hex Head Bolt	4(6)	B-1793-00	B-1751-00
18	Screw	2	B-1837-00	B-1748-00
19	Screw	1	B-1749-00	B-1749-00
20	Screw	1	B-1837-00	B-1750-00
21	Retaining Washer	2	E-2223-00	D-2499-00
22	Retaining Washer	1	E-2224-00	D-2498-00
23	Test Cock	3	78-930-01	78-930-01
24	Check Seat	2	L-5152-00	L-4864-00
25	Check O-Ring	2	D-3086-00	D-3046-00
26	R.V. Seat	1	L-5153-00	L-4863-00
27	R.V. O-Ring	1	D-3087-00	D-3045-00

REPAIR PARTS

Model 40-200S Stainless Steel (1/4" to 1")



American Backflow Specialties

www.americanbackflow.com

(800) 66-BKFLO (619) 527-2525 Fax: (619) 527-2527