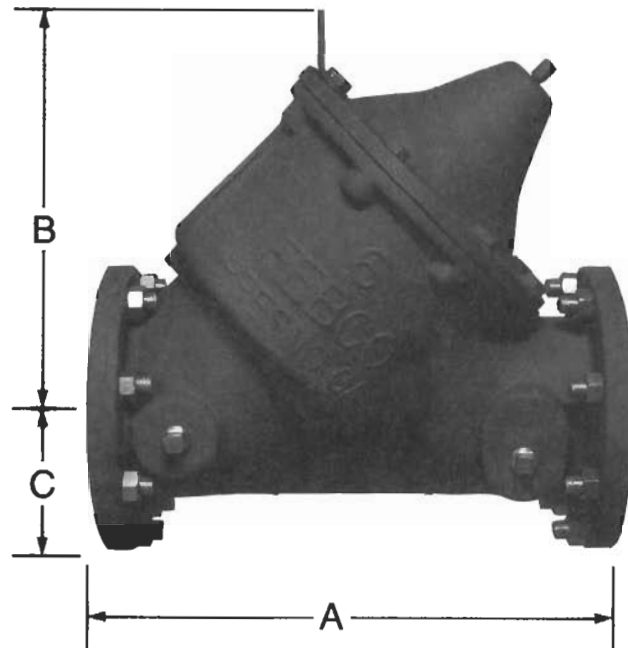


American Backflow Specialties

(800) 66-BKFLO (619) 527-2525 Fax: (619) 527-2527
www.americanbackflow.com



Model 406UL (4" through 8") Detector Check for Automatic Fire Sprinkler Systems



Features

- DuraCast iron body superior strength, corrosion resistance and lighter weight.
- 250 PSI Working Pressure for superior strength.
- Center-stem-guided, spring-loaded check for positive check seating.
- Internal epoxy coating for longer valve life.
- Simple service procedures.
- Reversible seat disc for ease of maintenance.

Specifications

Detector check shall consist of a single spring-loaded, center-stem-guided check valve, in parallel with a by-pass meter assembly. Elastomeric seat disc must be reversible, seat rings shall be B-61 bronze, bolted to the valve bodies with an O-ring seal.

The main check assembly shall be guided at the seat ring and at the cover by replaceable non-corrosive bushings to assure positive check seating. Head loss through the assembly shall not exceed 3 PSI at velocities from zero up to and including 15 FPS. Flow curves shall be documented by independent laboratory testing.

The by-pass meter assembly shall consist of a full port ball valve, Bronze water meter and a single check in series.

Approvals: UL Listed

Dimensions

SIZE	A	B	C	WT. (LBS.)
4	16 1/8	12 1/4	4 1/2	105
6	19 1/4	15 1/2	5 1/2	174
8	23	17 3/4	6 3/4	228

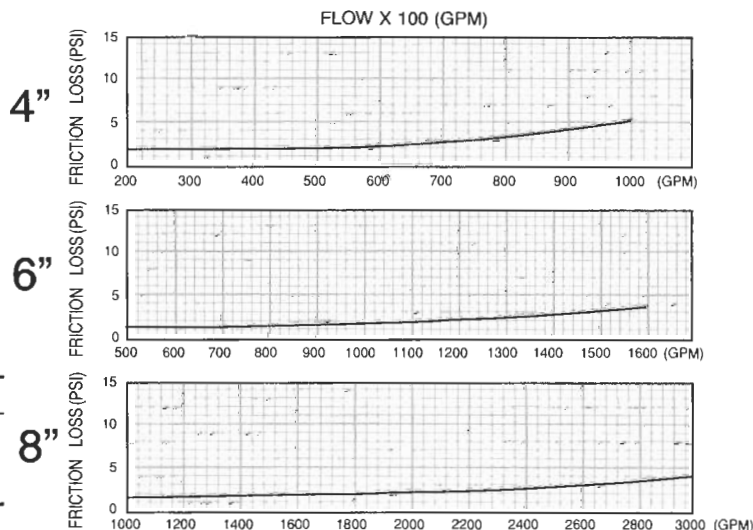
Typical Applications

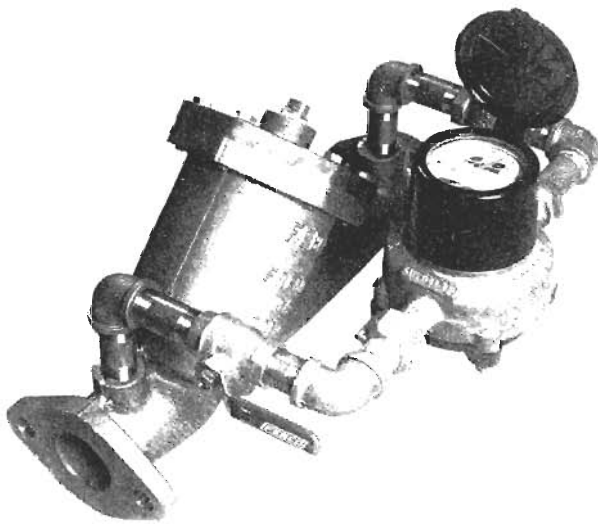
A typical application is in the piping of an automatic fire sprinkler system. The Model 406 UL Detector check is not a backflow prevention assembly.

Characteristics

Sizes	
Mainline	4", 6", 8"
Standard by-pass	3/4"
Maximum working pressure	250 PSI
Hydrostatic test pressure	500 PSI
Temperature range	32°F to 110°F (0°C to 60°C)
Fluid	Water
End Detail	Flanged ANSI B16.42, Class 150
Main valve body	Ductile iron ASTM A536 Grade 65-45-12 epoxy coated Internals
	8 mils minimum
Trim	Bronze ASTM B-61
By-pass meter	Totalizing type 1 to 20 GPM Size: 5/8" X 3/4"
By-pass sizes	
Standard	3/4"
Optional	
4" and 6" Devices	1" & 1 1/2"
8" Devices	1", 1 1/2" & 2"
Elastomers	Nitrile ASTM D-2000

Remote reading flow meter available





Model 406 Detector Check (2") for Automatic Fire Sprinkler Systems

Features

- Can be installed horizontally or vertically
- Center-stem-guided, spring-loaded check for more positive seating
- Replaceable bronze seat ring
- Reversible seat disc for ease of service
- Meter detects leakage and/or theft of water from Automatic Fire Sprinkler Systems

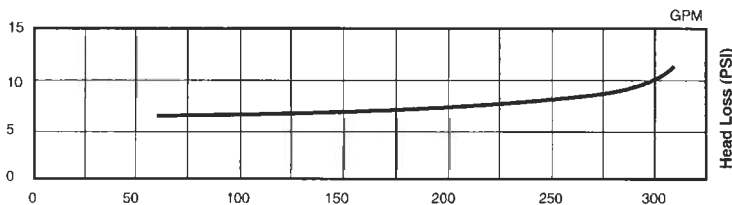
Characteristics

By-pass: 3/4" IPS

Maximum Working Pressure	175 PSI
Hydrostatic Test Pressure	350 PSI
Temperature Range	32°F to 110°F
Fluid	Water
End Detail	2 Bolt Meter Flange
Main Valve Body	Bronze
Trim	Seat Ring: Bronze
Disc Holder	Delrin
Spring	Stainless Steel
By-pass Meter	Bronze Totalizing Water Meter

Remote reading flow meter available.

Flow Curve



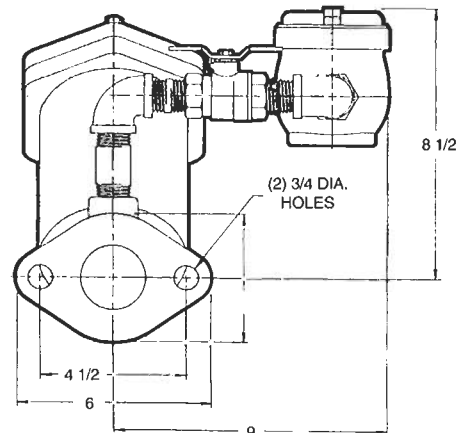
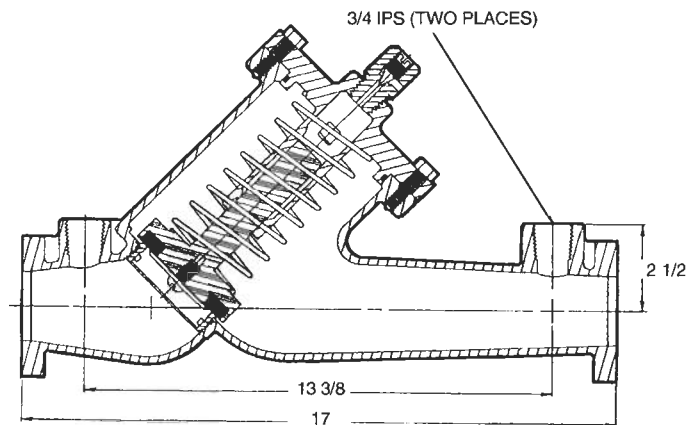
Specifications

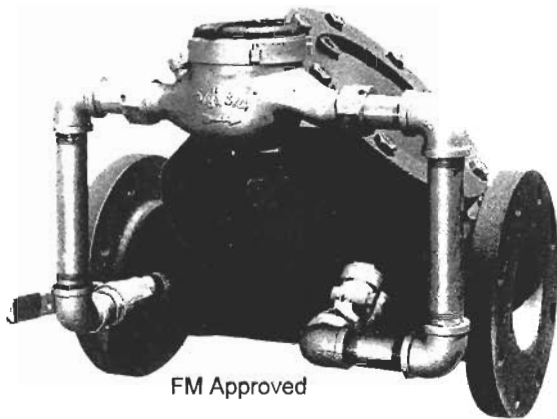
The Detector Check 2" mainline valve shall consist of an internally spring loaded "Y" pattern check valve having a bronze body, bronze replaceable bushing in the cover, a bronze replaceable seat ring, stainless steel spring and delrin disc holder to insure positive check seating.

The by-pass line shall consist of a 3/4" IPS shut-off valve, bronze totalizing water meter and a bronze single check valve in series. The unit is also available without by-pass.

Typical Applications

Automatic fire sprinkler systems.





Model 406 (4" through 10") Detector Check for Automatic Fire Sprinkler Systems

Characteristics

Standard by-pass:	3/4"
Maximum working pressure	175 PSI
Hydrostatic test pressure	700 PSI
Temperature range	32°F to 140°F (0°C to 60°C)
Fluid	Water
End detail	Flanged ANSI B16.1
Main valve body	Ductile iron ASTM A536 Grade 65-45-12 epoxy coated 10-20 mils
Trim	Bronze ASTM B-61
By-pass meter	Totalizing type, 1 to 20 GPM Size: 5/8" x 3/4"
Internal check assembly	Stainless steel, 300 Series
By-pass sizes	
Standard	3/4"
Optional	
4" & 6" Devices	1" & 1 1/2"
8" & 10" Devices	1", 1 1/2" & 2"
Elastomers	Nitrile ASTMD-2000
Remote reading flow meter available.	

Features

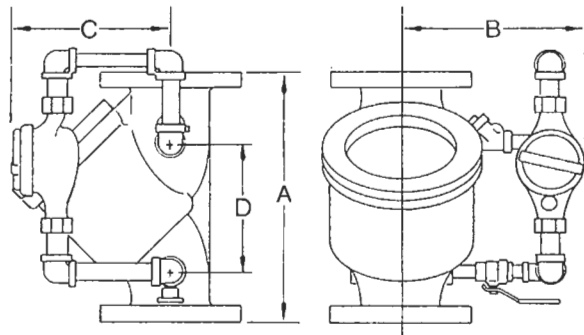
- The *DuraCheck* features all stainless steel check assemblies for corrosion resistance, reduced fouling and longer valve life.
- *DuraCast*[™] ductile iron body for superior strength, corrosion resistance and lighter weight.
- Can be installed horizontally or vertically.
- Center-stem-guided, spring-loaded check.
- Simple service procedures.
- Reversible seat disc.

Specifications

Detector check assembly shall consist of a single spring loaded, center stem guided check valve, in parallel with a by-pass meter assembly. All internal parts included in the main check assembly shall be of Series 300 stainless steel, and shall not contain any dissimilar metals. Elastomeric seat disc must be reversible, seat rings shall be B-61 bronze, bolted to the valve bodies with an "O" ring seal.

The main check assembly shall be guided at the seat ring and at the cover by replaceable non-corrosive bushings to assure positive check seating. Head loss through the assembly shall not exceed 4 PSI at velocities from zero up to and including 7.5 FPS. Flow curves shall be documented by independent laboratory testing.

The by-pass meter assembly shall consist of a full port ball valve, Bronze water meter and a single check in series.



Typical Applications

Automatic fire sprinkler systems.

Options

OS&Y gates, left hand by-pass, remote reader, meter CFPM & epoxy coated exterior valve.

Dimensions and Weights

SIZE	A	B	C	D	NET WT. (Lbs.)
4	16 1/8	15	11	9 1/8	102
6	19 1/4	16	14	12 1/2	168
8	23	17	18	13 3/8	218
10	29	20	22	17 3/8	403

Flow Curves

