

Model 775 PVB Assembly For High Hazard Service

FEATURES

- All bronze body and covers 3" and 4", cast iron body and covers 6" through 10" with internal epoxy coating standard.
- Two independent inline spring loaded checks on 3" and 4" units and two independent "Y" pattern spring loaded check assemblies standard on 6" through 10" devices.
- Corrosion resistant internal parts.
- Designed for minimum head loss.

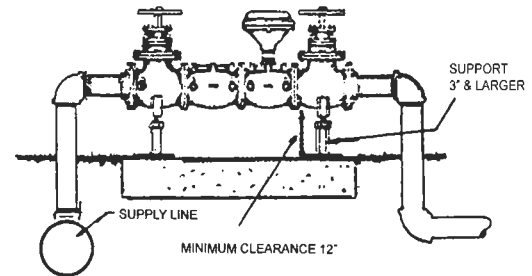
SPECIFICATIONS

The Pressure Vacuum Breaker Backflow Preventer shall consist of two independently operating spring loaded check valves with a vacuum breaker air inlet head mounted on the second check and three test-cocks. An inlet gate valve and outlet gate valve comprise a complete serviceable device.

The 3" and 4" devices shall consist of two inline bronze bodies, covers, and vacuum breaker head assembly. Corrosion resistant internal parts standard. The 6" through 10" devices consist of two independent "Y" pattern cast iron spring loaded check valves and one bronze bodied vacuum breaker head. Internal epoxy coating is standard and all internal parts are corrosion and wear resistant. Gate valves supplied are flanged non rising stem. Both check valves and vacuum breaker head shall be constructed so they may be serviced without removing the device from the line.

APPLICATIONS

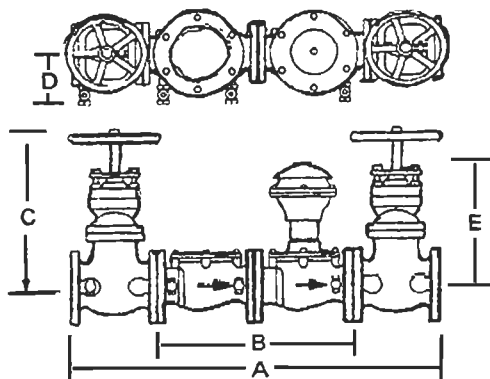
PVB assemblies are used to protect against toxic and non-toxic backsiphonage conditions in industrial plants (in-plant applications, cooling towers, laboratories, laundries, swimming pools and lawn sprinkler systems).



INSTALLATION

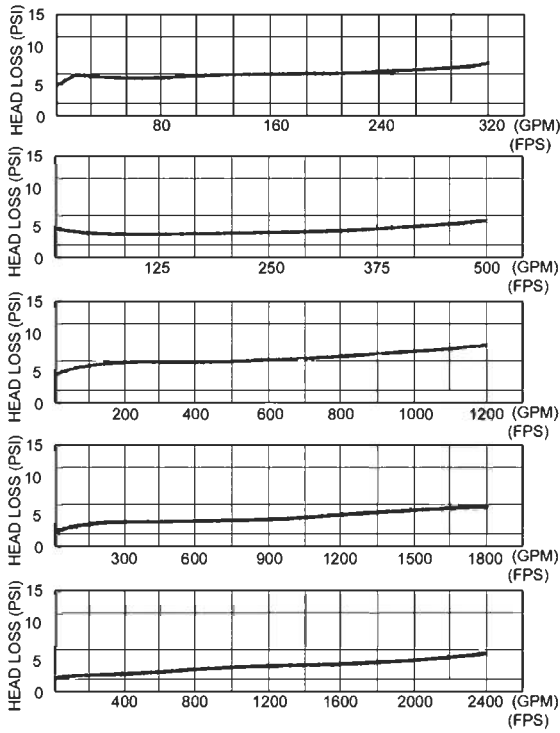
Pressure Vacuum Breaker assemblies should be installed at least 12" above the highest piping and outlet downstream of the assembly to preclude backpressure. Assemblies should be installed so they are easily accessible for maintenance, periodic testing, and where discharge will not be objectionable. Assemblies must not be installed where backpressure could occur.

The discharge pressure shall be maintained above 3.0 PSI on 1/2" through 1 1/4" sizes and 5.0 PSI on 1 1/2" and 2" sizes to insure seating of the spring loaded air inlet poppet.



SIZE	A	B	C	D	E	LBS
3"	34 1/2"	18 1/8"	14 5/8"	5 7/8"	10 1/2"	222
4"	38 1/8"	19 9/16"	16 1/2"	6 1/2"	11 1/4"	307
6"	59 1/16"	38 3/16"	21 1/4"	8 1/4"	14"	755
8"	69 3/16"	46 1/16"	26"	9 1/2"	18"	1250
10"	84 3/16"	58 1/16"	30"	10 1/2"	22"	1700

FLOW CURVES

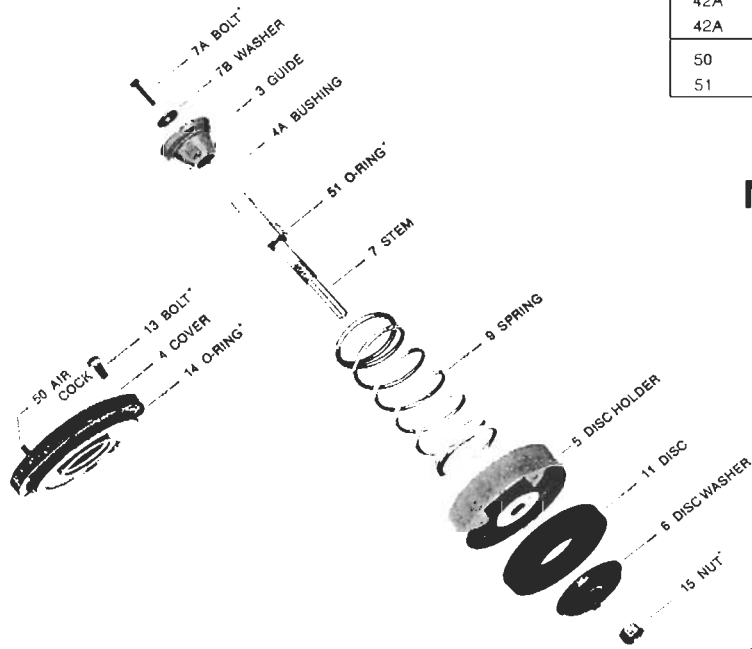


REPAIR PARTS 6"-10"

FIG. #	DESCRIPTION	AMT.	6"	8"	10"
2	Seat Ring	2	780-276	780-277	780-278
2A	Bushing	2	780-281	780-282	780-282
3	Guide	2	190-002	190-003	190-004
4	Cover	2	780-309	780-310	780-311
4A	Bushing	2	780-313	780-313	780-313
5	Disc Holder	2	190-006	190-007	190-008
6	Disc Washer	2	190-010	190-011	190-012
7	Stem	2	780-335	780-336	780-337
7A	Screw	-	511-515-08	511-515-08	511-515-08
7B	Washer	2	780-338	780-338	780-338
9	Spring	-	780-344	780-345	780-346
11	Seat Disc	2	780-360	780-361	780-362
12	O-Ring	2	399-264-72	399-273-72	740-095
13	Capscrew	16	511-519-12	511-520-12	-
13	Capscrew	24	-	-	511-520-14
14	O-Ring	2	398-272-72	398-451-72	740-102
15	Locknut	2	521-550-00	521-551-00	521-551-00
16	Gasket	3	780-368	780-369	780-370
17	Bolt	12	-	-	-
17	Bolt	24	511-020-26	511-020-28	-
17	Bolt	36	-	-	511-021-30
17A	Nut	12	-	-	-
17A	Nut	24	521-020-00	521-020-00	-
17A	Nut	36	-	-	521-021-00
40	Ball Valve	3	781-048	781-048	781-048
41	Nipple (Not Shown)	3	571-181-55	571-181-55	571-181-55

GATE VALVES

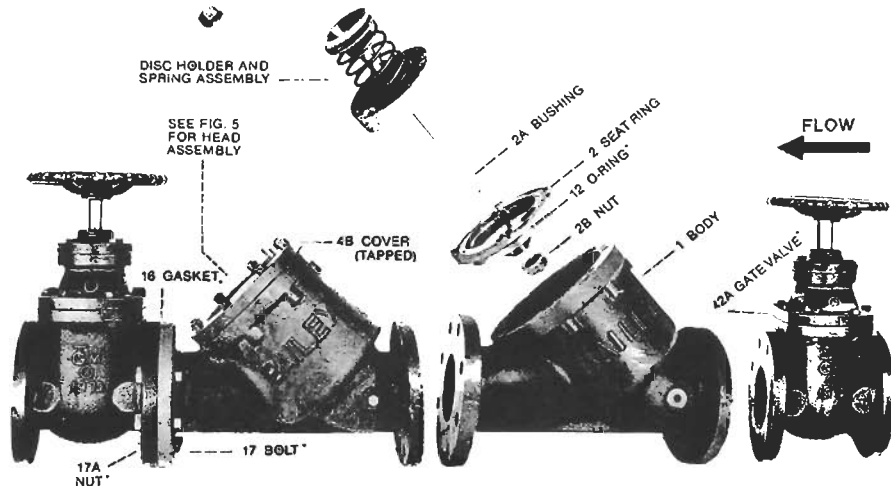
42A	Metal Seated NRS	2	780-196	780-197	780-298
42A	Resilient Seated NRS	2	781-014	781-015	781-016
50	Aircock	2	780-416	780-416	780-416
51	O-Ring	2	399-116-72	399-118-72	399-118-72



MATERIALS & CHARACTERISTICS

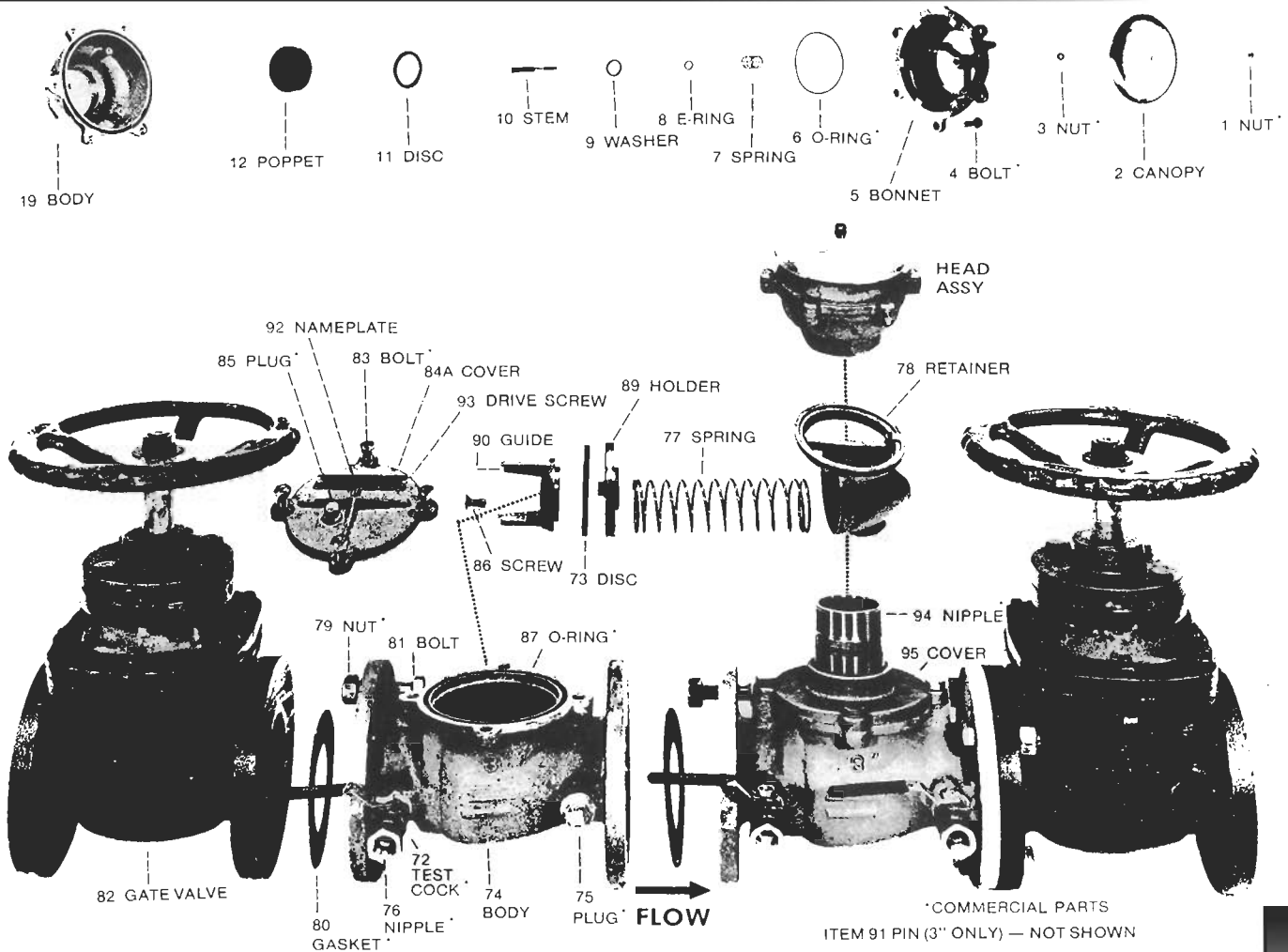
Max. Working Pressure	150 PSI
Hydrostatic Test Pressure	300 PSI
Temperature Range	32°F to 140°F
Fluid	Water
End Detail	3" and 4" Flanged ANSI B16.24, 6" thru 10" Flanged ANSI B16.1
Main Valve Body	Bronze ASTM B-584-78 (3" and 4") Gray iron ASTM A-126 (6" thru 10") epoxy coated internal
Valve Trim	Bronze ASTM B-61
Vacuum Breaker Head	Bronze ASTM B-584-78
Elastomers	Nitrile ASTM D-2000

MODEL 775



American Backflow Specialties

(800) 66-BKFLO (619) 527-2525 Fax: (619) 527-2527
www.americanbackflow.com



MODEL 775 SIZES 3"-4" REPAIR KITS & PARTS



Assemblies/Kits			
Check Kit (73,86,87,89,90,91)	1 EA	905-028	905-029
Rubber Parts (includes 73,87)	1 EA	902-353	902-398
Cover Kit w/Name Plate (includes 84A,85,87,91,92,33)	-	902-351	902-349
Lg. Mounting Kit (79,80,81,88; Both Ends)	-	905-034	905-035

FIG. NO.	DESCRIPTION	QUANT.	PART NO. 775 HEAD
1	Nut		523-543-00
2	Canopy		300-085
4	Bolt	6	511-514-06
6	O-ring		398-247-72
	Bonnet Assembly (3,5-10)		901-857
	Poppet (11,12)		901-860
	Rubber Parts Kit (6,11)		902-350

MODEL 775

FIG. NO.	DESCRIPTION	QUANT.	775 3" ASSY.	775 4" ASSY.
72	Test Cock	3	781-047	781-047
73	Disc	2	450-073	450-097
76	Nipple-Body	3	571-181-41	571-181-41
77	Spring	2	630-086	630-084
78	Retainer	2	100-829	100-835
79	Nut	12	521-019-00	-
79	Nut	24	-	521-019-00
80	Gasket	3	780-366	780-367
81	Bolt	12	511-019-18	-
81	Bolt	24	-	511-019-20
82	Gate Valve	2	780-145	780-146
82	Resilient Wedge Gate Valve	2	781-012	781-013
83	Bolt	8	511-516-08	-
83	Bolt	12	-	511-517-08
86	Screw	2	700-059	700-061
87	O-Ring	2	398-247-72	398-254-72
88	Washer (Not Shown)	8	-	360-058
89	Disc Holder	2	100-830	100-836
90	Guide	2	100-831	100-837
91	Pin (Not Shown)	2	760-007	-
94	Nipple		571-183-15	571-183-15
95	Cover		100-833	100-839