

Model 826YD (2-1/2"-10") Reduced Pressure Detector Assembly

Features

- The **DuraCheck**, features all stainless steel check assemblies for corrosion resistance, reduced fouling and longer valve life.
- **DuraCast**, ductile iron body for superior strength, corrosion resistance and lighter weight. By-pass line has water meter in series with an approved reduced pressure assembly.
- Low Head Loss

Specification

Reduced pressure detector assembly shall consist of a mainline reduced pressure configured backflow assembly in parallel with a reduced pressure by-pass assembly.

Flow curves shall be documented by independent laboratory testing. Mainline valve bodies and covers shall be manufactured of ductile iron ASTM A-536, Grade 65-45-12 and shall be flanged, ANSI B 16.1, Class 125, internal and external fusion epoxy coating.

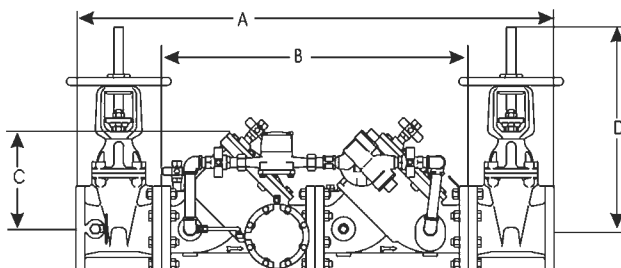
The by-pass shall consist primarily of a bronze water meter in series with a bronze reduced pressure backflow preventer.

All low flow demands up to a minimum of 3 GPM (0.189 L/s) are to pass only through the by-pass meter and meter-size reduced pressure assembly and be accurately recorded. All flows above that of 3 GPM will pass through both the line-size reduced pressure assembly and by-pass without accurate registration by or damage to the meter.

Shut-off valves and testcocks shall be resilient seated with full flow characteristics and are to be considered integral to the assembly. The mainline shut-offs are also to be OS & Y, UL/FM for fireline service.

Typical Applications

Automatic fire sprinkler systems containing toxic substances.

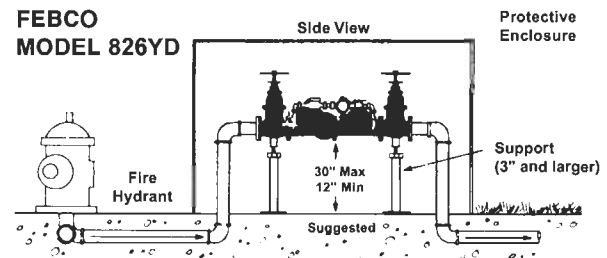


Options

Less gates, air gap drain, LH by-pass, remote reading, Meter CFPM.

Installation

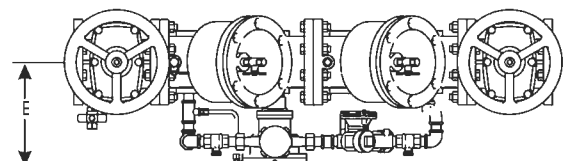
The Reduced Pressure Detector Assembly should be installed horizontally with a suggested minimum clearance of 12" between the assembly and the floor or grade. They must be installed where discharge from the relief valve will not be objectionable and can be positively drained away. They should be installed where easily accessible for testing and maintenance and must be protected from freezing. Thermal water expansion and/or water hammer downstream of the backflow preventer can cause excessive pressure. Excessive pressure situations should be eliminated to avoid possible damage to the system and assembly.



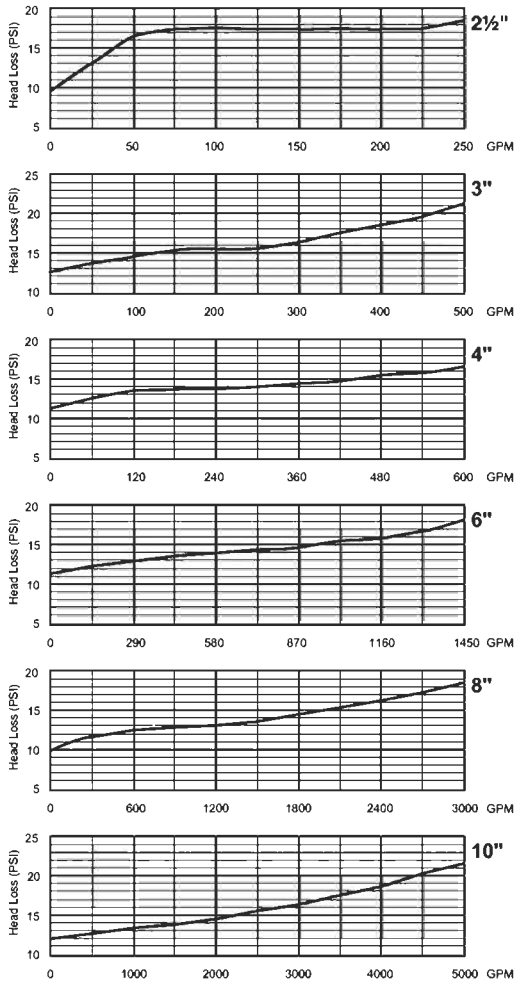
Dimensions and Weights*

SIZE	(U.S. - Inches)					Net Wt. (lbs)	
	A	B	C	D**	E	GV	LG
2 1/2	37 1/4	22 1/8	7 1/2	16 3/8	10 1/4	243.0	134.0
3	41 3/4	25 5/8	8 1/2	22 1/4	10 1/2	298.0	154.0
4	50 7/16	32 3/8	11	23 1/4	11	469.0	194.0
6	59 3/4	38 5/8	14	30 1/8	12	752.0	397.0
8	69 3/16	46 1/8	18	37 3/4	13	1207.0	537.0
10	84 1/4	58 1/8	22	48	14	1617.0	957.0

* Applies to OS&Y gated units only. Subject to manufacturing tolerance.
** Varies per manufacturer.



Model 826YD Flow Curves



Agency Compliance

FCCC & HR

ASSE Listed (Std. 1047-1990)

UL Listed*

FM Approved**

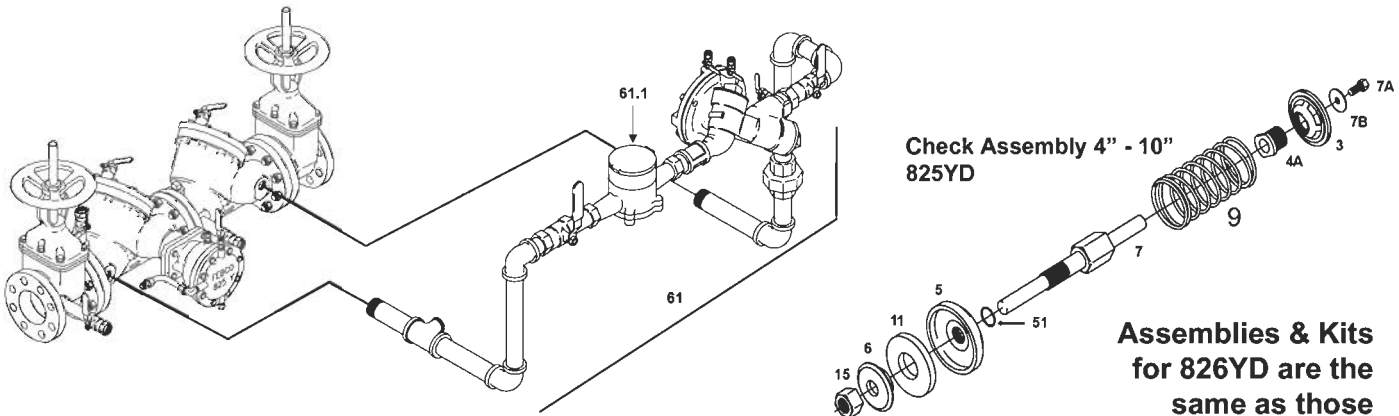
* Valves must be supplied with resilient seated shut-off valves for USC and FM approvals to be in effect.

** UL and FM Listings only applicable with approved OS&Y gates.

Characteristics and Materials

Maximum working pressure	175 PSI (1200 KPa)
Hydrostatic test pressure	350 PSI (2400 KPa)
Temperature range	32°F to 140°F (0°C to 60°C)
Fluid	Water
End detail	Flanged
Main valve body	Ductile iron grade 65-45-12
epoxy coated internal	10-20 mils
Internal check assembly	Stainless steel
Trim	Bronze
By-pass valve body	Bronze
By-pass meter	Totalizing, 1 to 20 gpm size 5/8" x 3/4"
Mainline shut-off valves	OS&Y, UL/FM
Elastomers:	Nitrile Diaphragm: Nitrile, fabric reinforced

Remote reading
flow meter available



Check Assembly 4" - 10"
825YD

Assemblies & Kits
for 826YD are the
same as those
for 825YD.

Repair Kits & Parts

Most parts are similar to 825YD and can be found in that part's section

Relief Valve With ByPass: Model 826YD

Item No.	Description	2 1/2	3	4	6	8	10
9	1 st Check Spring	780-349	780-350	630-142	630-143	630-144	630-145
9	2 nd Check Spring	630-140	630-141	780-778	780-779	780-780	780-781
42	Resilient Wedge OS&Y Gate Valve	780-891	780-893	780-895	780-897	780-899	780-901
61	ByPass Kit	905-127	905-127	905-127	905-127	905-127	905-127
61.1	Meter (Std.-Gal.)	780-666	780-666	780-666	780-666	780-666	780-666

American Backflow Specialties

www.americanbackflow.com

(800) 66-BKFLO

(619) 527-2525

Fax: (619) 527-2527

