

Hersey Meters

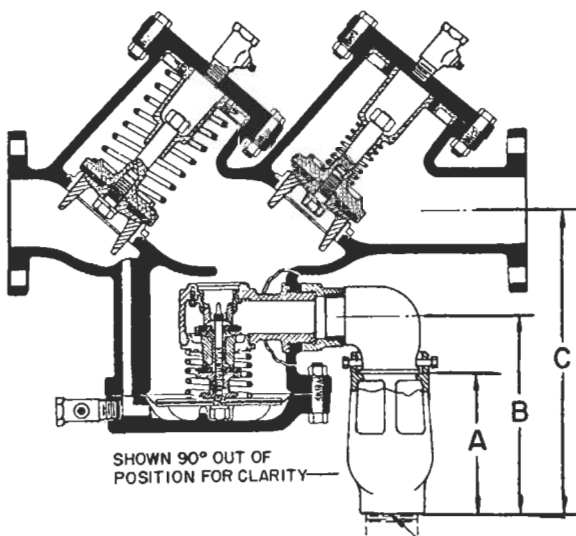
Air Gap Drain Funnel for installation with MODEL 6CM (2-1/2", 3", 4", 6", 8" & 10")

DESCRIPTION: Easily installed air gap funnel to plumb discharge from relief valve vent of 6CM reduced pressure principle device. Should plumbed drainage system become clogged, backflow will spill out through the fixed air gap between funnel and 6CM unit. Two bolts allow simple field installation to the standard cast iron relief valve outlet as furnished with the device. The bottom of the air gap drain funnel is threaded to allow easy installation of drainage pipe. The device is constructed of cast iron and is designed in accordance with the National Plumbing code for Drain Funnel Air Gaps.

FUNCTION: Provides protection of the Model 6CM from contamination due to backflow in the drain line when installed between the relief valve outlet and the plumbing drainage system. When installed to a 6CM, the air gap drain funnel will prevent contamination from cross connection between the potable water supply and the fixture that handles the draining of the waste.



DIMENSIONS



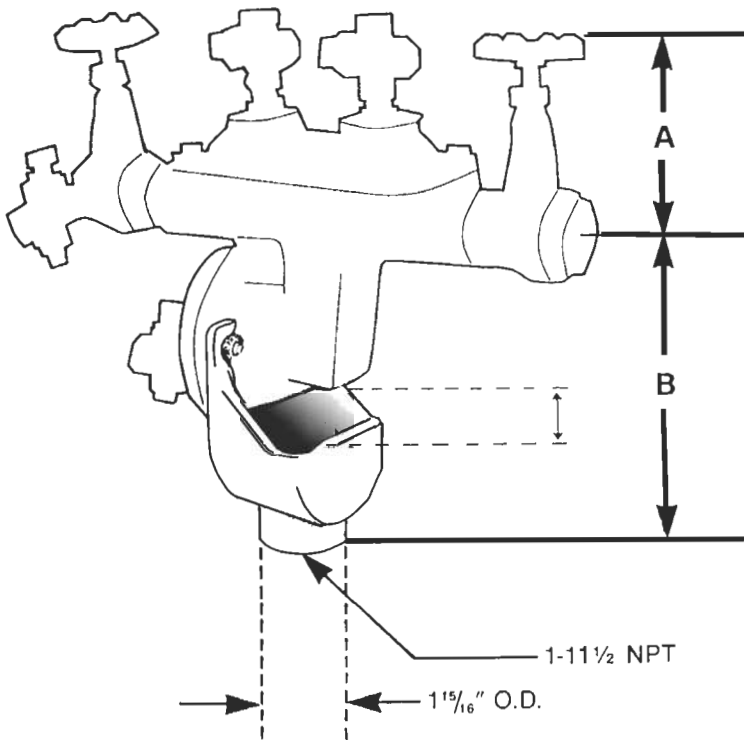
SIZE	PART NUMBER	A	B	C	D THREAD SIZE	WGT. LBS.
2½"	63358	8½"	10¼"	15"	2-11½ NPT	6
3"	63358	8½"	10¼"	15½"	2-11½ NPT	6
4"	63358	8½"	10¼"	16½"	2-11½ NPT	6
6"	63358	8½"	10¼"	17¾"	2-11½ NPT	6
8"	63858	14½"	18½"	28¾"	4-8 NPT	11½
10"	63858	14½"	18½"	30"	4-8 NPT	11½

Hersey Meters

FRP II AIR GAP DRAIN FUNNEL (3/4", 1", 1-1/4", 1-1/2" & 2") Part #65639



DESCRIPTION: Easily installed air gap funnel to plumb discharge from relief valve vent of FRP-II reduced pressure principle device. Should plumbed drainage system become clogged, backflow will spill out through the fixed airgap between funnel and FRP-II unit. Two bolts and nuts allow simple field installation to the relief valve flange. The device is constructed of cast iron and is designed in accordance with the National Plumbing code for Drain Funnel Air Gaps.



SIZE	Part Number	A	B	Wgt. Lbs.
3/4	65639	3 3/8	7 1/2	3.1
1	65639	4 5/8	7 1/2	3.1
1 1/4	65640	4 3/4	9 1/2	5.3
1 1/2	65640	5 7/8	9 1/2	5.3
2	65640	6 7/8	9 3/4	5.3