



## Hersey® Meters

### Model DC Weighted Lever Detector Check Valves (2", 3", 4", 6", 8", 10")

#### OPERATION

While the mainline valve is closed, any low flow will be directed through the bypass and measured by the bypass meter. With pressure loss of 2.0 psi, the mainline valve opens, allowing unrestricted flow. The mainline valve and check on the bypass prevent loss of water from the system. Closing the inlet shutoff valve permits in-line servicing of the bypass meter while the mainline remains in service.

#### APPLICATIONS

For installation in commercial fire lines or any water supply system to detect leakage or unauthorized use. Designed for horizontal installation.

#### APPROVALS

UL, ULC listed; FM approved (2" and 3").

#### DESCRIPTION

HERSEY Model DC Detector Check Valves consist of a main check valve with a reinforced elastomeric seat, operated by a weighted lever (available with optional trim kit and bypass meter). The Model DC prevents water from re-entering the potable water system, while detecting leaks in the fire sprinkler system or unauthorized use of sprinkler system water.

The optional bypass is comprised of a shutoff valve, swing check, and a Hersey Model MVR magnetic turbine meter, or a Hersey Model 400/500 IIS positive displacement meter. Solid state remote reading systems are available for all meters offered with the Model DC (see electronics section).

END CONNECTIONS: Flange x Flange.

#### MATERIALS & CHARACTERISTICS

Maximum Working Pressure 175 PSI

Hydrostatic Test Pressure 350 PSI

Temperature Range 33F to 100F

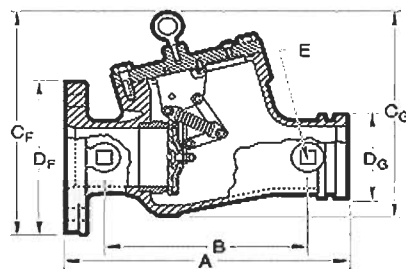
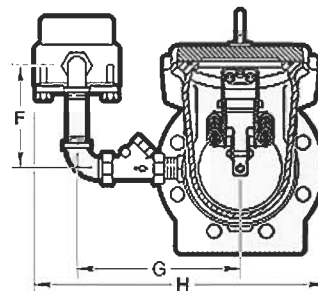
Value Body Bronze - 2"; Epoxy coat cast iron - 3" & 12"

Clapper Seat Reinforced elastomer on a bronze seat

Optional Bypass Meter Case Bronze

Optional Bypass Meter Interior Plastic (400IIS)

Optional Bypass Meter Register Sealed plastic.

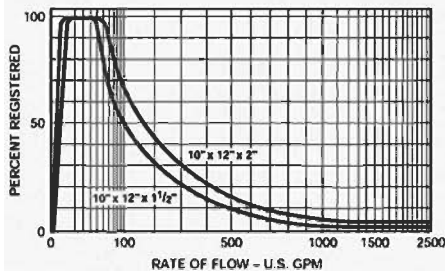


**10**  
Beeco  
Hersey  
Craneline

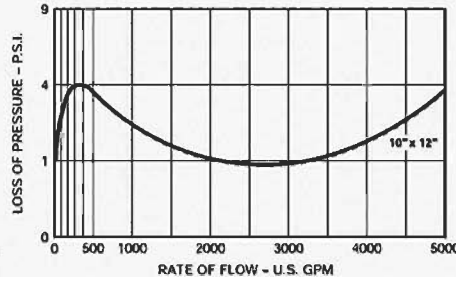
Valve Size	3"	4"	6"	8"	10"
A	15.00	15.00	21.00	25.00	28.75
B	11.00	11.00	16.00	19.62	22.69
Cf, Cg	12.94	13.31	17.25	21.00	25.62
Df, Dg	7.50	9.00	11.00	13.50	16.00
E	.75 NPT	.75 NPT	.75 NPT	.75 NPT	1.5 NPT
F	5.25	5.25	8.00	11.50	18.00
G	8.56	8.56	9.69	11.00	16.50
H	14.90	15.12	17.25	20.31	30.25
Weight:					
Flange x Flange	70.00	79.25	166.50	318.00	501.00
Flange x Grooved	N/A	66.50	148.50	290.00	N/A
Grooved x Grooved	N/A	54.00	130.00	262.00	N/A

# FLOW CURVES

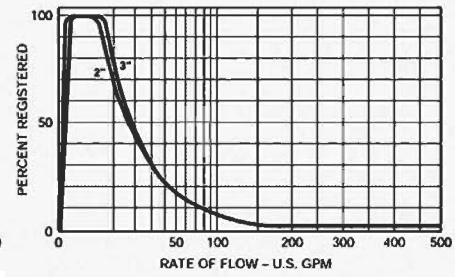
ACCURACY - 12"



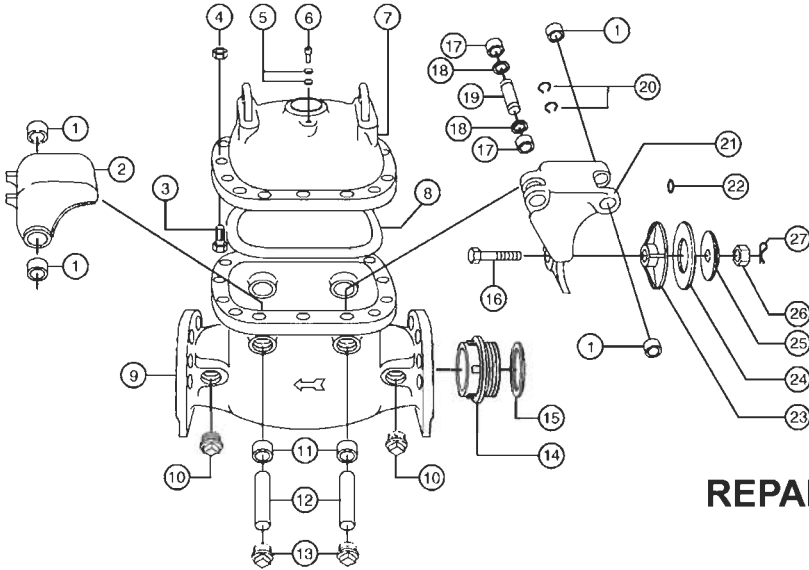
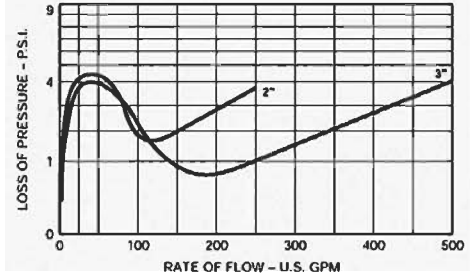
HEAD LOSS - 12"



ACCURACY - 2" & 3"



HEAD LOSS - 2" & 3"



## REPAIR PARTS - MODEL DC

Ref. No.	Description	2" Model	3" Model	4" Model	6" Model	8" Model	10" & 12" Model
1	Weight and Swing Arm Bushing	53825 (2)	54325 (4)	55325 (4)	56325 (4)	57325 (4)	58325 (4)
2	Weight, full	53827	54327	55327	56327	57328	58328
3	Hex Bolt	90220 (10)	90130 (10)	90134 (12)	90135 (16)	90139 (22)	90342 (28)
4	Hex Nut	90122 (10)	90212 (10)	90251 (12)	90251(16)	90301 (22)	90301 (28)
5	Vent Screw Washer	59073 (2)	59073 (2)	59073 (2)	59073 (2)	59073 (2)	59073 (2)
6	Vent Screw	59003	59003	59003	59003	59003	59003
7	Cover *	N/A	N/A	N/A	N/A	N/A	N/A
8	Gasket	53906	54527	55727	56527	57427	58427
9	Bottom Case	N/A	N/A	N/A	N/A	N/A	N/A
10	Plug	59007(2)	59007 (4)	59012 (4)	59013 (4)	59014 (4)	59014 (4)
11	Bushing	53807 (4)	54507 (4)	55707 (4)	56507 (4)	57307 (4)	58307 (4)
12	Pin	53879 (2)	54430 (2)	55379 (2)	56379 (2)	57379 (2)	58379 (2)
13	Pin Plug	59005 (4)	59011 (4)	59006 (4)	59007 (4)	59008 (4)	59009 (4)
14	Seat Unthreaded	N/A	N/A	N/A	N/A	N/A	N/A
15	Seat Gasket for Threaded Seat	N/A	N/A	N/A	N/A	N/A	N/A
16	Clapper Bolt	53878	54318	55318	56318	57318	58318
17	Swing Arm Bushing	53837 (2)	54337 (2)	55362 (2)	56362 (2)	57362 (2)	58362 (2)
18	Swing Arm Washer	53823 (2)	54323 (2)	55323 (2)	56323 (2)	57323 (2)	58323 (2)
19	Swing Arm Roller Pin	53839	54338	55345	56384	57384	58384
20	Pin Clips	53874 (2)	54351 (2)	55698 (2)	55326 (2)	57498 (2)	58383 (2)
21	Swing Arm	53838	54313	55313	56313	57313	58313
22	Clapper O-ring	53893	54396	55396	56396	57396	58396
23	Clapper	53815	54365	55365	56315	57315	58315
24	Clapper Rubber	53816	54366	55366	56316	57316	58316
25	Clapper Disc	53817	54367	55367	56317	57317	5831726
27	Clapper Nut ** Clapper Cotter Pin **	59145	59146	59147	59148	59149	59150

\*\* Replaced by nut with nylon insert.

Note: If more than one part is required per assembly, quantity is noted after part number (in parenthesis).