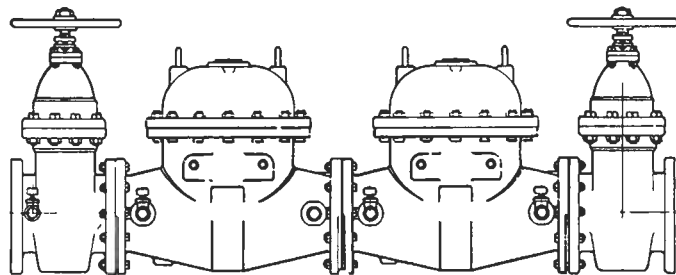


# American Backflow Specialties

(800) 66-BKFLOW (619) 527-2525 Fax: (619) 527-2527  
www.americanbackflow.com



## Hersey™ Meters

Model No. 1 (2" to 10")  
Double Check Valve Assembly

### FEATURES

Internally weighted check valves are loaded to 1 PSI in the direction of flow to ensure positive closure and prevent leakage.

Simple, rugged construction for use on both domestic and fireline services.

Famous Hersey lever valves allow full-flow with an extremely low loss of head.

All internal parts are accessible without moving the device from the line.

### DESCRIPTION

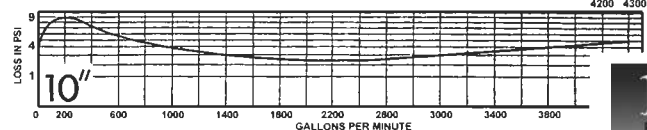
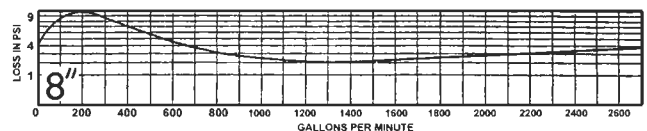
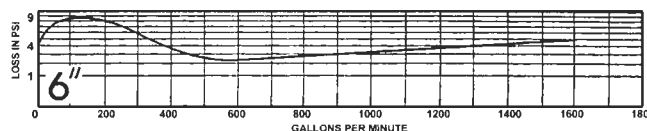
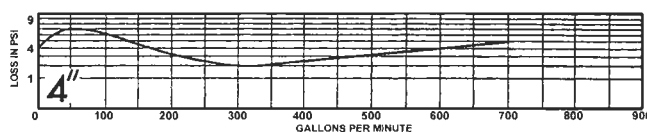
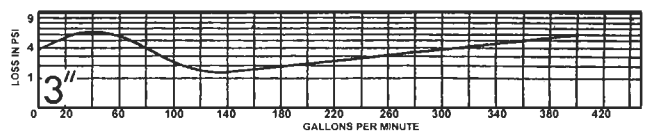
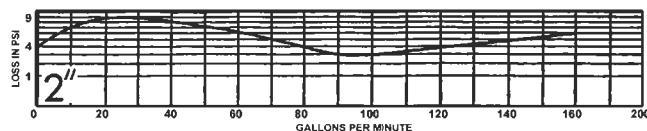
The Hersey No. 1 is designed for installation in pipelines to prevent water that is objectionable (but not injurious to health) from backflowing into a potable water system.

The assembly consists of two Hersey lever valves, two gate valves, and four test cocks. The lever valves are the same type and construction as those used in Hersey model DC.

### MATERIALS

Body - 2"	Bronze
- 3 - 10"	Galvanized Cast Iron
Working parts	Bronze
Valve seats	Bronze
Valve discs	Neoprene

### FLOW CURVES

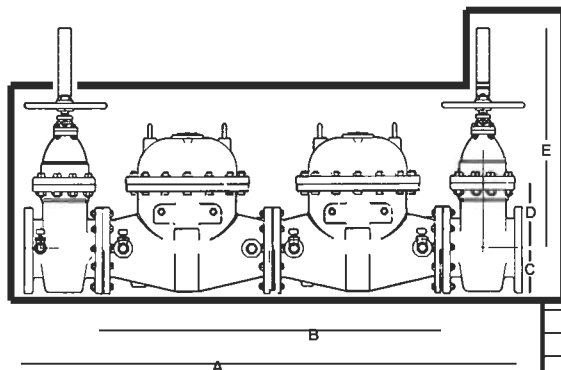


**10**  
Beaco  
Hersey  
Craneline

### NOTE

This model was produced 1950-1978. The 3" & 4" models were altered in 1972 to use a lead weight swing check design. If your serial number is after 5231063, you have the newer style.

### DIMENSIONS

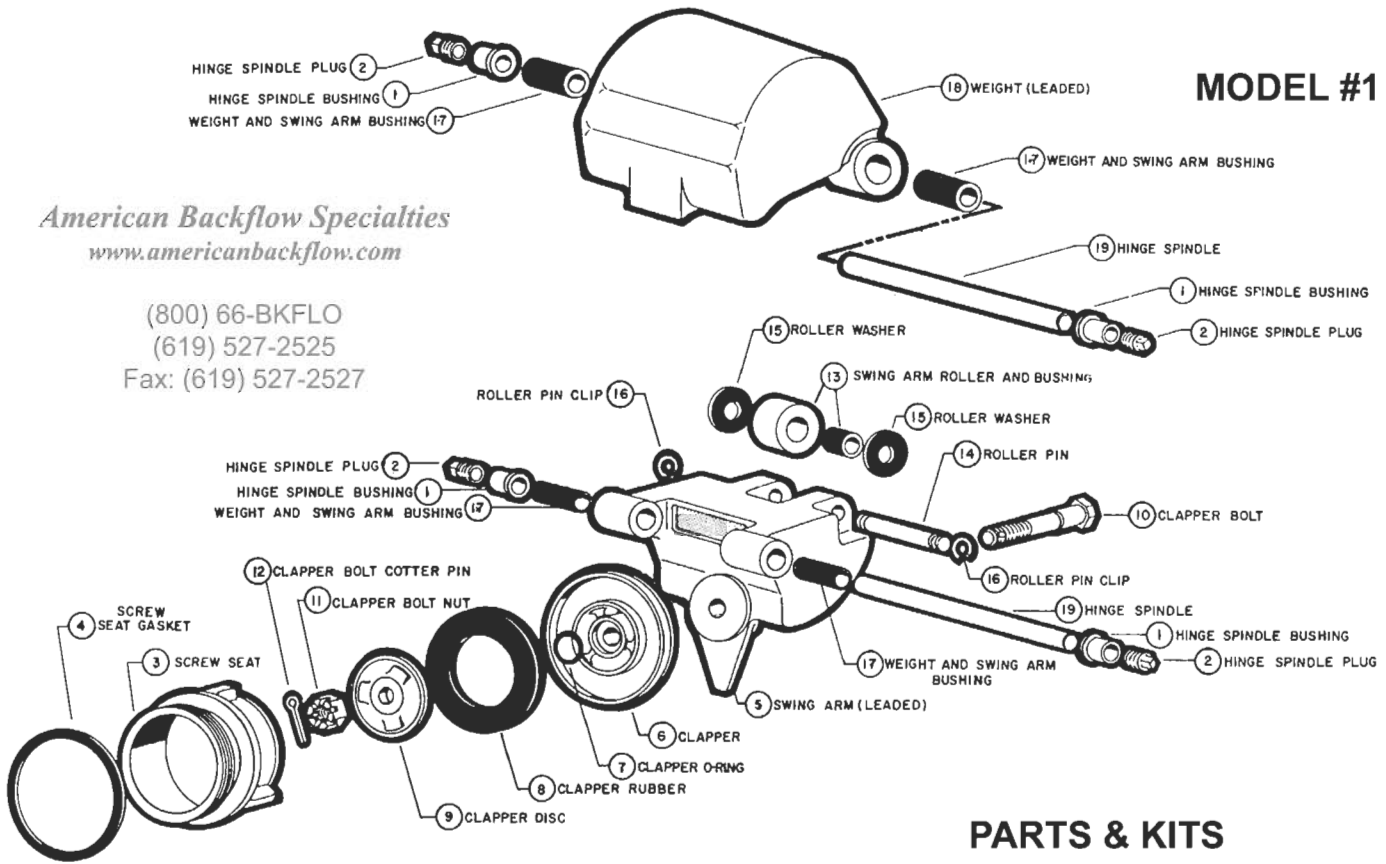


Size	2'	2'	3'	4'	6'	8'	10'
End Detail	SCR	FLG	FLG	FLG	FLG	FLG	FLG
Max. GPM	FULL CAPACITY OF PIPE						
A	49 1/4	53 1/4	49	51	66	76	98
B	36	34	33	33	45	53	72
C	2 1/4	2 1/4	4	5	6	7 1/2	9 3/4
D	5 3/4	5 3/4	15 1/8	16 3/8	22 3/4	20 3/8	22 1/2
(OS&Y Gates) E	8 1/4	8 1/4	9 1/4	11 3/4	14 1/4	17	20 1/4
(NRS Gates) E	10 1/4	10 1/4	12 3/4	15 1/4	20 1/4	24 1/2	29
Size of Test Cocks	1/4	1/4	1/2	1/2	3/4	3/4	3/4
Net Weight—No Gates	86	91	318	400	930	2000	3140
with OS&Y Gates	120	125	330	600	1280	2500	4000
with NRS Gates	120	125	330	600	1280	2500	4000
Gross Weight—No Gates	105	110	240	460	980	2075	3240
with OS&Y Gates	140	145	360	675	1350	2600	4125
with NRS Gates	140	145	360	675	1350	2600	4125

# MODEL #1

American Backflow Specialties  
www.americanbackflow.com

(800) 66-BKFLO  
(619) 527-2525  
Fax: (619) 527-2527



## PARTS & KITS

#	DESCRIPTION	2"	3"	4"	6"	8"	10" & 10x12"
1	Hinge Spindle Bushing	53807	54507	55707	56507	57307	58307
2	Hinge Spindle Plug	59005	59011	59006	59007	59008	59009
3	Screw Seat	53811	54311	55711	56311	57311	58311
4	Screw Seat Gasket	19103	54312	55312	56312	57312	58312
5	Swing Arm (Less Bushings)	53813	54313	55313	56313	57313	58313
6	Clapper	53815	54315	55315	56315	57315	58315
7	Clapper O-Ring	53893	54396	55396	56396	57396	58396
8	Clapper Rubber	53816	54316	55316	56316	57316	58316
9	Clapper Disc	53817	54317	55317	56317	57317	58317
10	Clapper Bolt	53818	54318	55318	56318	57318	58318
11	Clapper Bolt Nut	53819	54319	55319	56319	57319	58319
12	Clapper Bolt Cotter Pin	53820	54320	55320	56320	57320	58320
13	Swing Arm Roller & Bushing	53821	54321	55321	56321	57321	58321
14	Swing Arm Roller Pin	53822	54322	55322	56322	57322	58322
15	Swing Arm Roller Washer	53823	54323	55323	56323	57323	58323
16	Swing Arm Roller Pin Clip	53824	54324	55324	56324	57324	58324
17	Swing Arm and Weight Rubber Bushing	53825	54325	55325	56325	57325	58325
18	Weight (Leaded — Less Bushings)	53827	54327	55327	56327	57327	58327
19	Swing Arm and Weight Hinge Spindle	53829	54329	55329	56379	57329	58329
	Casing Gasket	53906	54527	55727	56527	57427	58427
	Casing Bolt	90100	90211	90262	90135	90139	90316
	Casing Nut	90118	90212	90251	90251	90301	90301
	Center Flange Gasket	59017	95350	95351	95352	95353	95354*
	Center Flange Bolt	90266	90262	90266	90312	90316	90351
	Center Flange Nut	90251	90251	90251	90301	90301	90358
	Vent Screw	59003	59003	59003	59003	59003	59003
	Vent Screw Washer	59004	59004	59004	59004	59004	59004
	Test Cock	96245	96245	96245	96254	96254	96254
	Test Cock Nipple	96123	96123	96123	96060	96060	96060
	Test Cock Plug	59006	59007	59012	59013	59014	59014
	Test Cock Reducing Bushing	95052	95052	96053	96047	96188	96188
	<b>Rubber Parts Kit</b>	<b>53955</b>	<b>54455(A)</b> <b>54456(B)</b>	<b>55655(A)</b> <b>55656(B)</b>	<b>56455</b>	<b>57455</b>	<b>58455</b>
	Casing Gasket	53906	54527	55727	56527	57427	58427
	Clapper O-Ring	53893	54396	55396	56396	57396	58396
	Clapper Rubber	53816	54316(A)	55316(A)	56316	57316	58316
	Clapper Bolt Cotter Pin	53820	54320	55320	56320	57320	58320

(A) Pre-1972 design. (B) 1972 design. \* This is the 10" item number. Item number for the 10x12" is 95355.