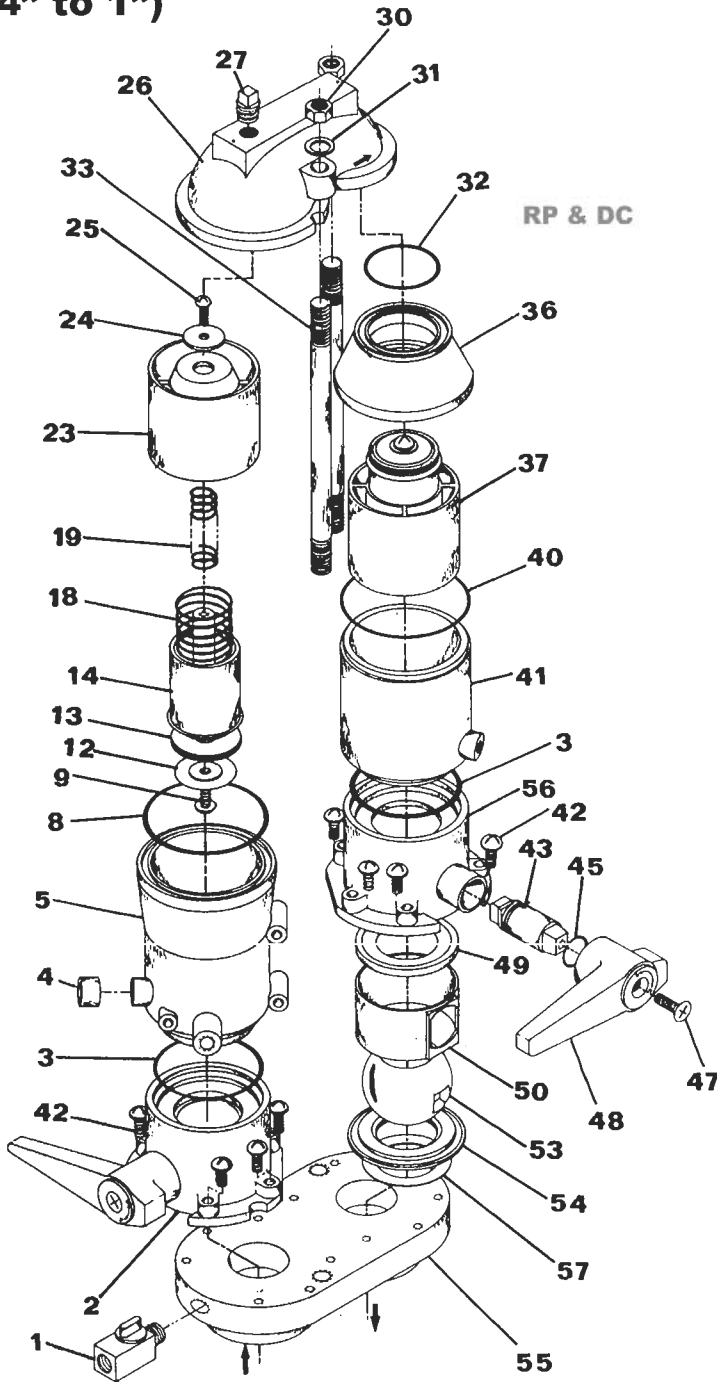
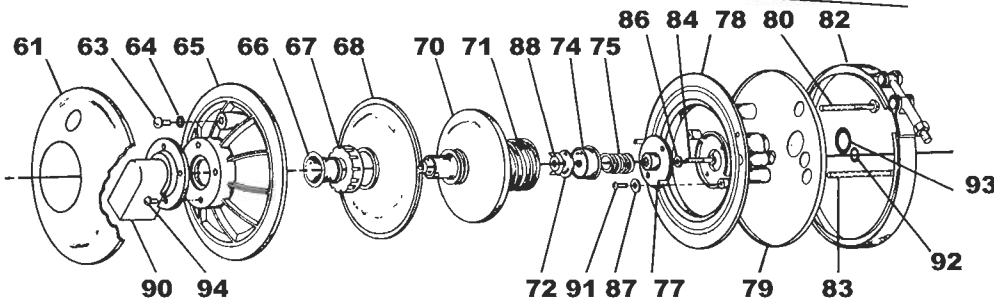


PARTS - Model BDC & BRP (3/4" to 1")



#	PART #	DESCRIPTION	QTY.
1	80-0220	Test Cock Assy.	4
2	80-0223	Inlet Ball Valve Assy.	1
	80-0668	Outlet Ball Valve Assy.	1
3	400-0068	O-Ring	2
4	80-0417	Ferrule	3
5	80-0434	Valve Body-Inlet-RP Assy.	1
	80-0435	Valve Body-Inlet-DC Assy.	1
8	400-0070	O-Ring	1
9	400-0013	#10-24 x 3/4 RHSSMS	2
12	9-3577	Washer	2
13	9-3576	Disc	2
14	80-0119	Valve Stem	2
18	80-0208	Spring (RP Only)	1
19	9-3574	Spring - DC	2
	9-3574	Spring - RP	1
23	80-0118	Spring Retainer	2
24	80-0255	Washer	2
25	400-0250	#6 x 1/2 RHSSMS-Td. Cut.	2
26	80-0117	Cover	1
27	360-0283	Pipe Plug -1/8 NPT	1
30	400-0084	5/16-18 SS Hex Nut	2
31	400-0085	Washer	2
32	360-0279	O-Ring	1
33	80-0232	Stud	2
36	80-0123	Outlet Valve Seat	1
37	80-0222	Check Valve Assy. - DC	2
	80-0222	Ck. Vlv. Assy.-RP-Outlet	1
	80-0310	Ck. Vlv. Assy.-RP-Inlet	1
40	400-0069	O-Ring	1
41	80-0433	Valve Body Outlet Assy.	1
42	400-0221	#8-32 x 7/8 RHSSMS	12
43	80-0210	Ball Valve Stem	2
45	400-0094	O-Ring	2
47	400-0065	#10-24x1/2 OHSSMS	2
48	80-0125	Handle	2
49	80-0211	Seal	2
50	80-0209	Valve Ring	2
53	80-0120	Ball	2
54	80-0212	Seal	2
55	80-0116	Base-3/4" / 80-0260-1"	1
56	80-0124	Ball Valve Body	2
57	80-0594	Ball Valve Spacer	2
60	80-0256	Relief Valve Assy.	1
61	80-0214	Cover - Outer	1
63	400-0012	#10-24 x 3/8 RHSSMS	1
64	80-0254	Washer - Air Bleed	1
65	80-0237	Outer Body	1
66	80-0224	Rolling Diaphragm	1
67	80-0233	Diaphragm Retainer	1
68	80-0215	Diaphragm	1
70	80-0236	Diaphragm Support	1
71	80-0229	Diaphragm Spring	1
72	80-0261	Valve Disc	1
74	80-0226	Spring Retainer - Outer	1
75	80-0230	Coupler Spring	1
77	80-0227	Spring Retainer - Inner	1
78	80-0238	Inner Body	1
79	80-0213	Cover - Inner	1
80	400-0077	#10-24 x 1-1/2 RHSSMS	2
82	400-0083	V-Band Clamp	1
83	400-0076	#10-24 x 2-3/4 RHSSMS	1
84	360-0401	#6-32 x 3/4 RHSSMS	1
86	80-0231	Coupler Washer	1
87	80-0255	Washer	2
88	80-0561	Guide	1
90	80-0234	Diaphragm Cap	1
91	400-0079	#6-32 x 3/8 RHSSMS	2
92	400-0074	O-Ring	1
93	400-0173	O-Ring	1
94	400-0250	#6 x 1/2 RHSSMS-Td. Cut.	4



RP RELIEF VALVE

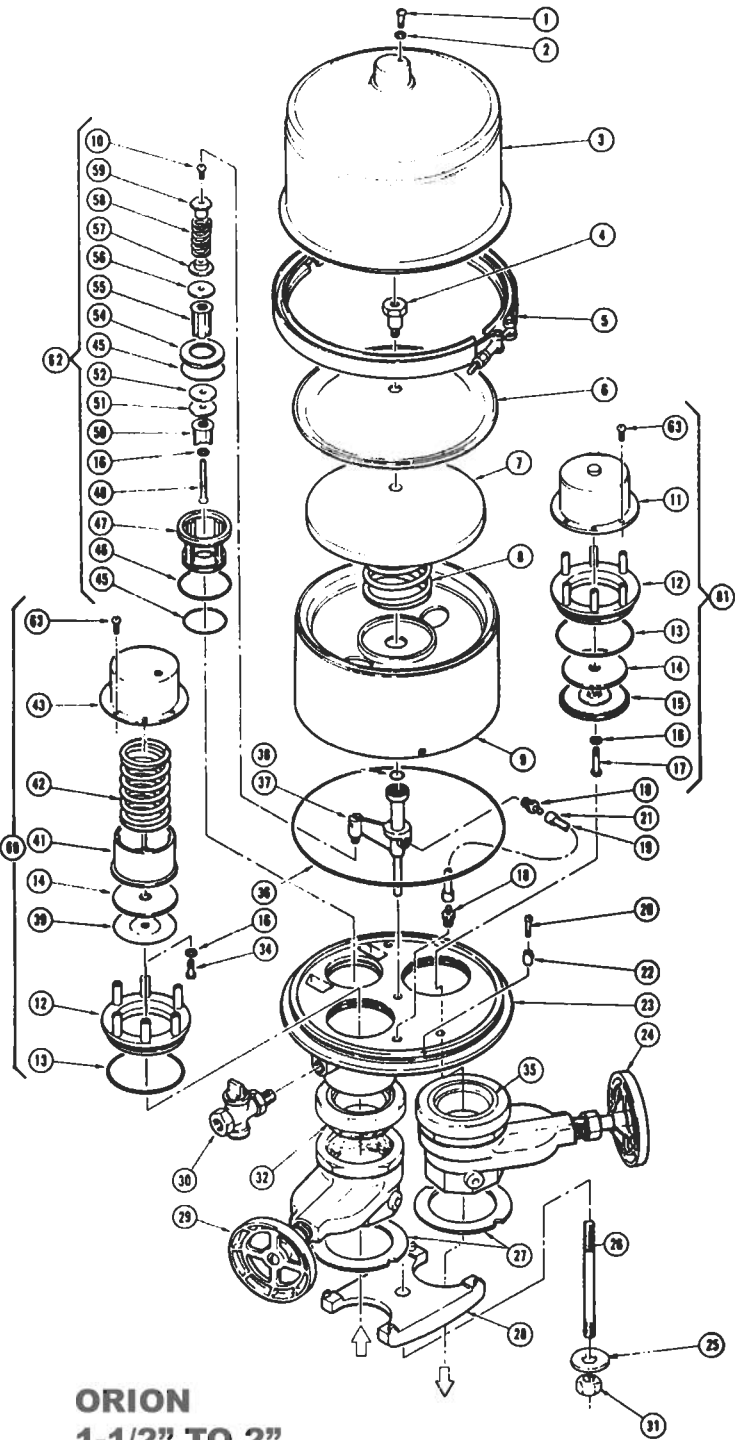


SERVICE KITS

80-0419	Service Parts Stocking Kit
80-0421	"0" Ring & Valve Disc Kit
80-0183	"0" Ring Kit
80-0219	Relief Valve Kit

PARTS

		2" RP 9-2929	2" DC 9-2930	1-1/2" RP 80-0069	1-1/2" DC 80-0070
1	400-0012	#10-24 x 3/8 Machine Screw	1	1	1
2	80-0254	Washer	1	1	1
3	80-0047	Cover Assy.	1	1	1
4	80-0013	Diaphragm Guide	1	1	1
5	360-0405	Clamp Assy.	1	1	1
6	80-0009	Diaphragm	1	1	1
7	80-0032	Diaphragm Support	1	1	1
8	80-0041	Diaphragm Spring	1	1	1
9	80-0038	Diaphragm Retainer	1	1	1
10	400-0079	#6-32 x 3/8 Machine Screw	1	1	1
11	80-0129	Spring & Retainer Assy.	1	1	1
12	80-0001	Valve Seat	2	2	2
13	360-0395	"0" Ring	2	2	2
14	80-0003	Valve Disc	2	2	2
15	80-0002	Back-up Washer	1	1	1
16	400-0119	#10 Brass Washer	3	2	3
17	400-D200	#10-24 x 1 Self Tapping Screw	1	1	1
18	900-24	Male Adapter	2	1	2
19	80-0042	Communication Tube	1	1	1
20	360-0401	#6-32 x 3/4 Machine Screw	2	2	2
21	900-40	1/2" Retainer	2	2	2
22	80-0029	Clip	2	2	2
23	9-4416	Base	1	1	1
	9-4417	Base	1	1	1
24	80-0546	Gate Valve - 2" Outlet	1	1	1
	80-0548	Gate Valve - 1 1/2" Outlet (Includes adapter-see #32)	1	1	1
25	360-0393	Washer	1	1	1
26	80-0472	1/2-13 Stud	1	1	1
27	9-4175	Clamp Ring	2	2	2
	80-0066	Clamp Ring	2	2	2
28	9-4178	Clamp	1	1	1
	80-0068	Clamp	1	1	1
29	80-0545	Gate Valve - 2" Inlet	1	1	1
	80-0547	Gate Valve - 1 1/2" Inlet (Includes adapter-see #32)	1	1	1
30	400-0216	Test Cock 1/4"	4	4	4
31	400-0100	1/2-13 Hex Full Nut	1	1	1
32	80-0445	Adapter Assy. - 2"	2	2	2
	80-0446	Adapter Assy. - 1 1/2"	2	2	2
34	400-0201	#10-24 x 3/4 Self Tapping Screw	1	1	1
35	80-0011	Gasket	2	2	2
36	360-0403	"0" Ring	1	1	1
37	80-0024	Link Assy.	1	1	1
38	360-0402	"0" Ring	1	1	1
39	80-0004	Washer	1	1	1
41	80-0023	Valve Stem	1	1	1
42	80-0020	Spring	1	1	1
	80-0025	Spring	1	1	1
43	80-0034	Spring Retainer	1	1	1
45	360-0399	"0" Ring	2	2	2
46	360-0398	"0" Ring	1	1	1
47	80-0031	Relief Valve Body	1	1	1
48	360-0397	#10-32 x 2 1/2 Brass Screw	1	1	1
50	80-0006	Relief Valve Guide	1	1	1
51	80-0007	Valve Disc-Lower	1	1	1
52	80-0008	Washer	1	1	1
54	80-0017	Relief Valve Seat	1	1	1
55	80-0005	Relief Valve Core	1	1	1
56	80-0010	Valve Disc-Upper	1	1	1
57	80-0015	Spring Retainer-Lower	1	1	1
58	80-0040	Coupler Spring	1	1	1
59	80-0014	Spring Retainer-Upper	1	1	1
60	80-0043	Inlet Check Valve Assembly-RP	1	1	1
	80-0044	Inlet Check Valve Assembly-DC	1	1	1
61	80-0045	Outlet Check Valve Assembly	1	1	1
62	80-0046	Relief Valve Assembly	1	1	1
63	400-0250	#6 x 1/2 RHSSMS- Td. Cut	12	12	12

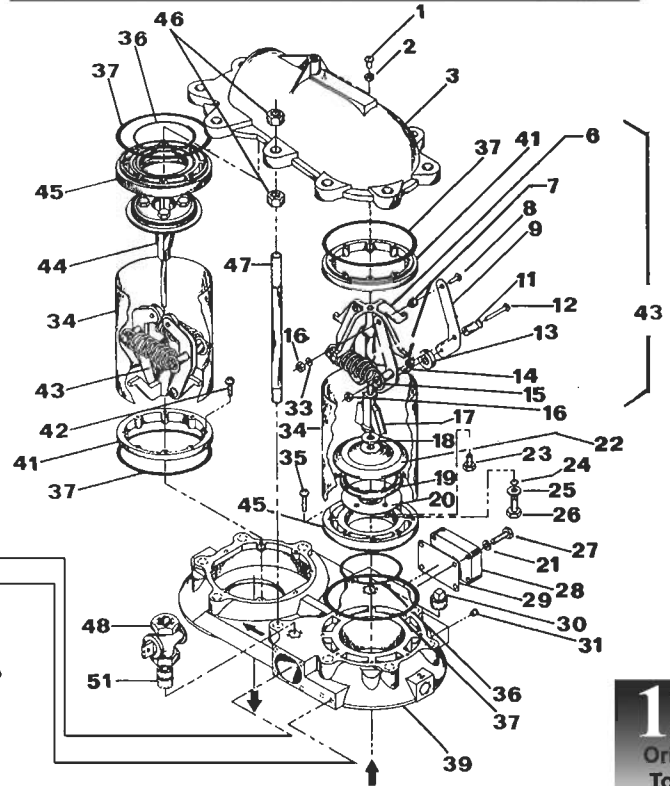
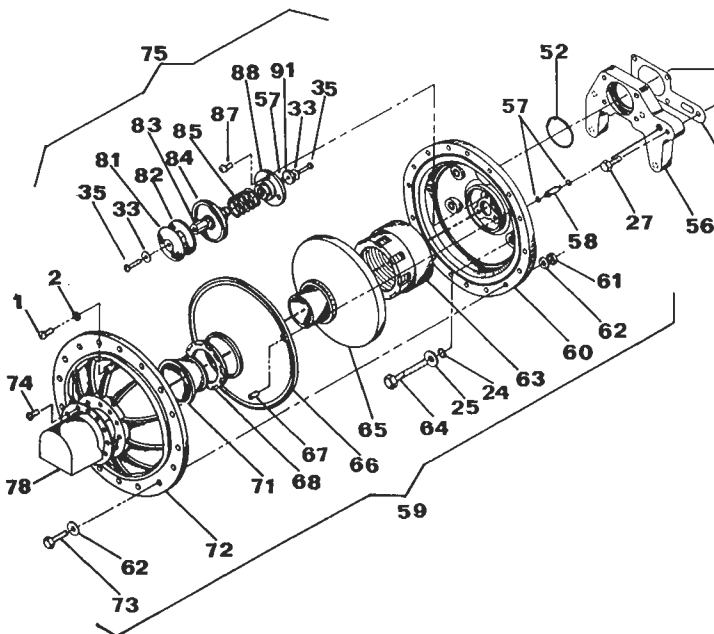


ORION
1-1/2" TO 2"
BACKFLOW PREVENTERS

PARTS - MODEL BDC & BRP - 3"

#	PART #	DESCRIPTION	RP	DC
1	400-0012	#10-24 x 3/8 Machine Screw	2	1
2	80-0254	Washer, Air Bleed	2	1
3	80-0326	Cover	1	1
5	400-0188	Gasket	2	2
6	80-0646	Spring Arm Support Assy.	2	2
7	80-0609	Spacer	8	8
8	400-0013	#10-24 x 3/4 Machine Screw	4	4
9	80-0595	Spring Arm	8	8
10	400-0179	5/8-11 x 2 Bolt	8	8
11	80-0605	Spring Rod	8	8
12	400-0076	#10-24 x 2-3/4 Machine Screw	4	4
13	80-0645	Roller Assembly	4	4
14	80-0608	Roller Pin	4	4
15	80-0557	Check Valve Spring	4	4
16	400-0234	#10-24 Nylock Hex Nut	4	4
17	80-0614	RP Cam Assy.	1	0
18	80-0647	Cam Spacer	1	0
19	80-0390	Valve Disc	2	2
20	80-0387	Valve Ring	2	2
21	400-0129	Washer	9	8
22	80-0384	Valve Plate	2	2
23	400-0206	1/4-20 x 1/2 SS Machine Screw	8	8
24	400-0006	O-Ring	6	2
25	400-0104	Washer	6	2
26	400-0172	5/16-18 x 1-1/4 Capscrew	2	2
27	400-0130	1/4-20 x 1 Capscrew	9	8
28	80-0340	Base Cap	1	2
29	80-0442	Base Cap Gasket	1	2
30	400-0210	Pipe Plug	1	1
31	400-0124	Pipe Plug	1	2
33	400-0119	Washer	8	8
34	80-0386	Casing	2	2
35	400-0014	#10-24 x 1 Machine Screw	16	16
36	400-0184	O-Ring	2	2
37	400-0183	O-Ring	4	4
39	80-0327	Base	1	1
41	80-0388	Locator	2	2
42	400-0013	#10-24 x 3/4 Machine Screw	16	16
43	80-0612	Spring Arm Assy.	2	2
44	80-0613	DC Cam Assy.	1	2
45	80-0389	Valve Seat	2	2
46	400-0100	1/2-13 Hex Full Nut	12	12
47	80-0309	Stud	10	10
48	400-0125	Test Cock	4	4
51	400-0126	Nipple	3	3
52	400-0132	O-Ring	1	0

#	PART #	DESCRIPTION	RP	DC
55	80-0436	Adapter Gasket	1	0
56	80-0341	Adapter - LH	1	0
57	400-0121	O-Ring	2	0
58	80-0432	Communication Tube	1	0
59	80-0342	Relief Valve Assy.	1	0
60	80-0324	Inner Body	1	0
61	400-0185	1/4-20 Hex Nut	16	0
62	400-0129	Washer	32	0
63	80-0443	Diaphragm Spring Assy.	1	0
64	400-0175	5/16-18 x 1-3/4 Capscrew	4	0
65	80-0338	Diaphragm Support	1	0
66	80-0348	Diaphragm	1	0
67	80-0437	Diaphragm Tube	1	0
68	80-0333	Diaphragm Nut	1	0
71	80-0318	Rolling Diaphragm	1	0
72	80-0325	Outer Body	1	0
73	400-0128	1/4-20 x 1-1/4 Capscrew	16	0
74	400-0211	10-24 x 1/2 Machine Screw	12	0
75	80-0346	Spring Coupler Assy.	1	0
78	80-0334	Diaphragm Cap	1	0
81	80-0330	Valve Disc Washer	1	0
82	80-0392	Valve Disc	1	0
83	80-0479	Coupler Nut	1	0
84	80-0332	Spring Retainer - Outer	1	0
85	80-0393	Coupler Spring	1	0
87	400-0206	1/4-20 x 1/2 Machine Screw	3	0
88	80-0321	Spring Retainer - Inner	1	0
91	80-0329	Spring Retainer Washer	1	0

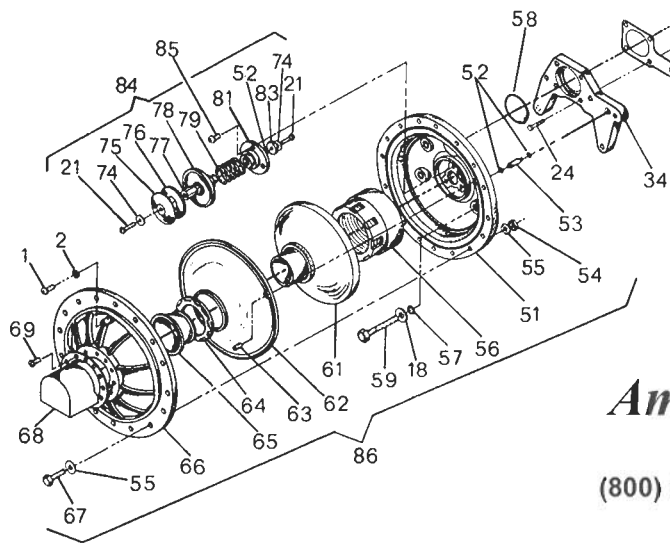
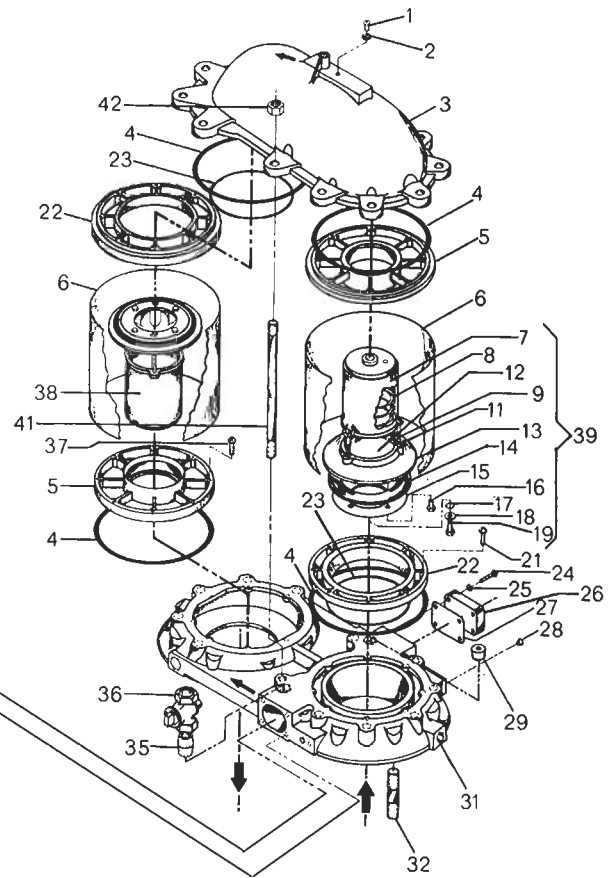


4 = Valves } not shown
 5 = Gasket }
 10 = Bolts }

PARTS - MODEL BDC & BRP - 4"

#	PART #	DESCRIPTION	RP	DC
1	400-0012	#10-24 x 3/8 Machine Screw	2	1
2	80-0254	Washer	2	1
3	80-0251	Cover	1	1
4	400-0240	Quad Ring	4	4
5	80-0248	Locator	2	2
6	80-0241	Casing	2	2 (1)
7	80-0247	Spring Retainer - Outer	2	2
8	80-0298	Spring, Check Valve	1	2
	80-0667	Spring Set, Check Valve	1	
9	80-0476	#8-32 x 2 Machine Screw	6	6
11	400-0107	#8-32 Hex Nut	6	6
12	80-0246	Spring Retainer - Inner	2	2
13	80-0245	Valve Plate	2	2
14	80-0240	Valve Disc	2	2
15	80-0242	Valve Ring	2	2
16	400-0206	1/4-20 x 1/2 SS Machine Screw	12	12
17	400-0094	O-Ring	2	2
18	400-0104	Washer	6	2
19	400-0134	5/16-18 x 1 Capscrew	2	2
21	400-0014	#10-24 x 1 Machine Screw	16	16
22	80-0249	Valve Seat	2	2
23	400-0096	O-Ring	2	2
24	400-0130	1/4-20 x 1 Capscrew	9	9
25	400-0129	Washer	9	9
26	80-0340	Base Cap	1	2
27	80-0442	Base Cap Gasket	1	2
28	400-0124	Pipe Plug	1	2
29	400-0210	Pipe Plug	2	2
31	80-0250	Base	1	1
32	80-0428	Stud	4	4
33	80-0436	Adapter Gasket	1	
34	80-0341	Relief Valve Adapter, L.H.	1	
35	400-0126	Nipple	4	4
36	400-0125	Test Cock	4	4
37	400-0013	#10-24 x 3/4 Machine Screw	16	16
38	80-0344	Check Valve Assy.	1	2
39	80-0282	Check Valve Assy. - RP	1	
41	80-0309	Stud	12	12
42	400-0100	1/2-13 Hex Full Nut	14	14
43	80-0438	Valve Assy., NRS - Inlet	1	1
	400-0177	Valve, NRS - Outlet	1	1
	80-0505	Valve Assy., OS&Y - Inlet	1	1
	400-0204	Valve, OS&Y - Outlet	1	1
	400-0207	Valve, Butterfly	2	2
46	400-0178	Gasket	2	2
47	400-0179	Bolts	12	12
51	80-0324	Inner Body	1	
52	400-0121	O-Ring	3	
53	80-0432	Communication Tube	1	
54	400-0185	1/4-20 Hex Nut	16	
55	400-0129	Washer	32	

#	PART #	DESCRIPTION	RP
56	80-0443	Diaphragm Spring Assy.	1
57	400-0006	O-Ring	4
58	400-0132	O-Ring	1
59	400-0175	5/16-18 x 1-3/4 Capscrew	4
61	80-0338	Diaphragm Support	1
62	80-0348	Diaphragm	1
63	80-0437	Diaphragm Tube	1
64	80-0333	Diaphragm Nut	1
65	80-0318	Rolling Diaphragm	1
66	80-0325	Outer Body	1
67	400-0128	1/4-20 x 1-1/4 Capscrew	16
68	80-0334	Diaphragm Cap	1
69	400-0211	#10-24 x 1/2 Machine Screw	12
74	400-0119	#10 Brass Washer	2
75	80-0330	Valve Disc Washer	1
76	80-0392	Valve Disc	1
77	80-0479	Coupler Nut	1
78	80-0332	Spring Retainer - Outer	1
79	80-0393	Spring Coupler	1
81	80-0331	Spring Retainer - Inner	1
83	80-0329	Spring Retainer Washer	1
84	80-0346	Spring Coupler Assy.	1
85	400-0255	1/4-20 x 3/4 SS Machine Screw	3
86	80-0342	Relief Valve Assy.	1



43=Valves
46=Gasket } not shown
47=Bolts

American Backflow Specialties
www.americanbackflow.com

(800) 66-BKFLO
(619) 527-2525
Fax: (619) 527-2527