

WILKINS

a ZURN company

Model 350 Double Check Valve Assembly 2-1/2" to 10"

FEATURES

Maximum working water pressure	175 PSI
Maximum working water temperature	140°F
Hydrostatic test pressure	350 PSI
End connections	
(Grooved for steel pipe)	AWWA C606
(Flanged)	ANSI B16.1
	Class 125

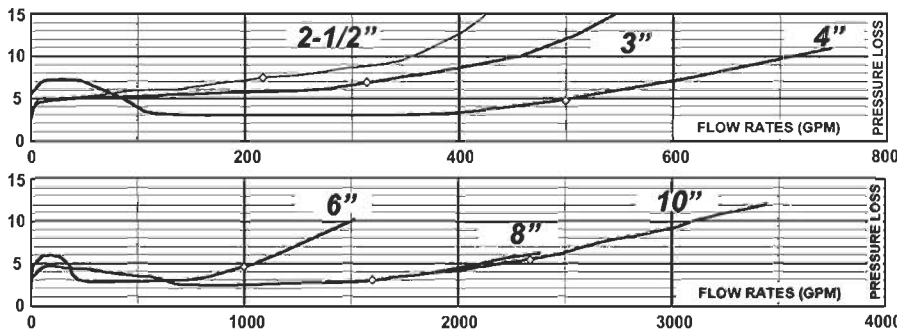
OPTIONS

- with NRS shut-off valves (standard)
- FS - with cast iron wye type strainer (flanged only)
- FSC - with epoxy coated wye type strainer (flanged only)
- G - with groove end gate valves
- GF - with grooved inlet gate connection and flanged outlet gate connection
- FG - with flanged inlet gate connection and grooved outlet gate connection
- L - less shut-off valves (flanged body connections)
- OSY - with OS & Y gate valves

ACCESSORIES

- Thermal expansion tank (Model WXTP)
- OS & Y Gate valve tamper switch (OSY-40)

FLOW CHARACTERISTICS



APPLICATION

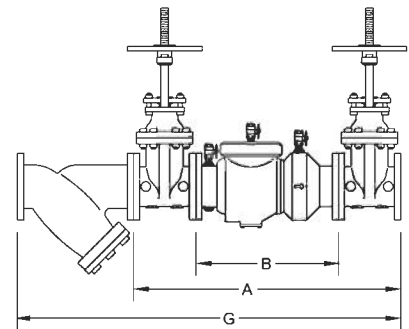
Designed for installation on potable water lines to protect against both backsiphonage and backpressure of polluted water into the potable water supply. The Model 350 shall provide protection where a potential health hazard does not exist.

STANDARDS COMPLIANCE

- ASSE® Listed 1015
- CSA® Certified (2 1/2" thru 8")
- IAPMO® Listed (2 1/2" thru 8")
- AWWA Compliant C510
- UL® Classified
- C-UL® Classified
- FM® Approved
- **USC FCCC & HR**

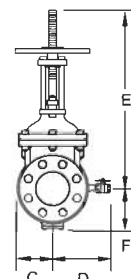
MATERIALS

Main valve body	Ductile Iron ASTM A 536 Grade 4
Access covers	Ductile Iron ASTM A 536 Grade 4
Coatings	FDA Approved fusion epoxy finish
Internals	Stainless steel, 300 Series
	NORYL™, NSF Listed
Fasteners	Stainless Steel, 300 Series
Seal ring	EPDM (FDA approved)
O-ring	Buna Nitrile (FDA approved)
Springs	Stainless Steel, 300 Series



DIMENSIONS & WEIGHTS

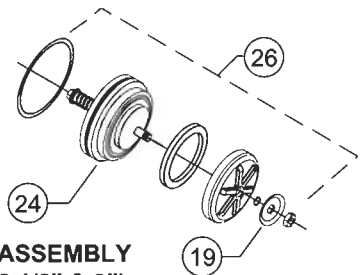
sz.	A	B LESS GATES	C	D	OS&Y		E	F	G	GATE VALVES		
					OPEN	CLOSED				w/o NRS	NRS	OS&Y
2 1/2	31	15 7/8	3 3/4	7 1/4	16 3/8	13 7/8	11 3/8	3 1/2	41 1/4	53	155	163
3	32	15 7/8	3 3/4	7 1/4	18 7/8	15 5/8	12 3/8	3 1/2	42 3/4	53	177	183
4	37 5/8	19 1/2	4 1/2	8	22 3/4	18 1/4	14 3/4	6	52 3/4	91	271	281
6	44 3/4	23 1/2	6	10	30 1/8	23 3/4	19	7	62 3/4	165	449	465
8	60 3/4	37 3/4	10	11	37 3/4	29 1/4	22 1/2	8 1/2	85	358	810	834
10	63 3/4	37 3/4	10	11	45 3/4	35 3/8	26 1/2	8 1/2	93 1/4	388	1148	1206



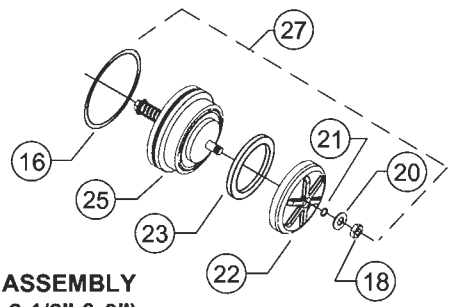
REPAIR KITS & PARTS - MODEL 350/450 2-1/2" & 3"

#RK212-350		REPAIR KITS
PART NO.	QTY.	DESCRIPTION
3507-12	2	SEAL RING
245N	2	O-RING
111N	2	O-RING

Capacity thru Schedule 40 Pipe (GPM) (350/450)				
Pipe size	5 ft/sec	7.5 ft/sec	10 ft/sec	15 ft/sec
2 1/2"	75	112	149	224
3"	115	173	230	346
4"	198	298	397	595
6"	450	675	900	1351
8"	780	1169	1559	2339
10"	1229	1843	2458	3687

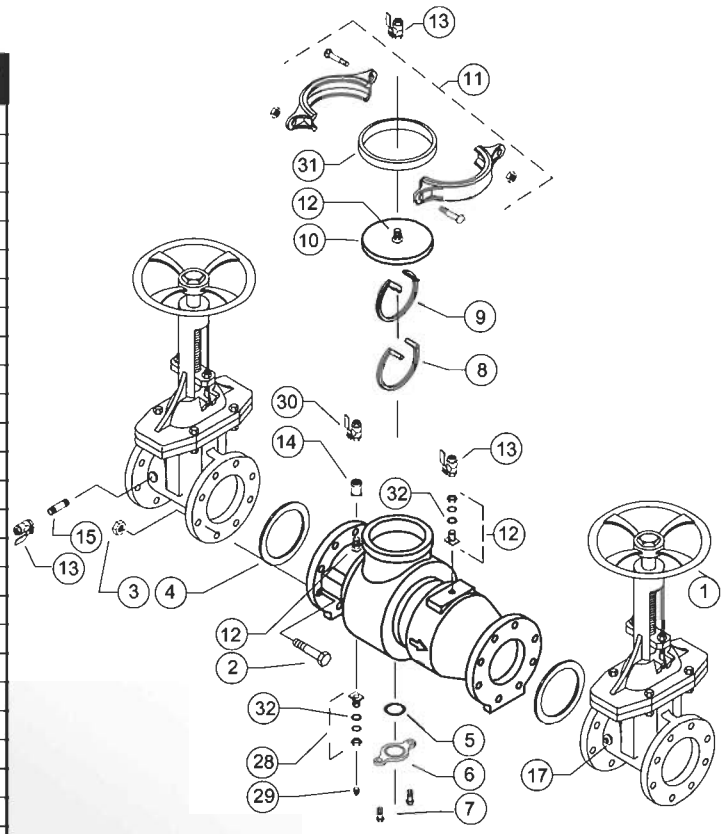


#1 CHECK ASSEMBLY
(350 & 450 2 1/2" & 3")



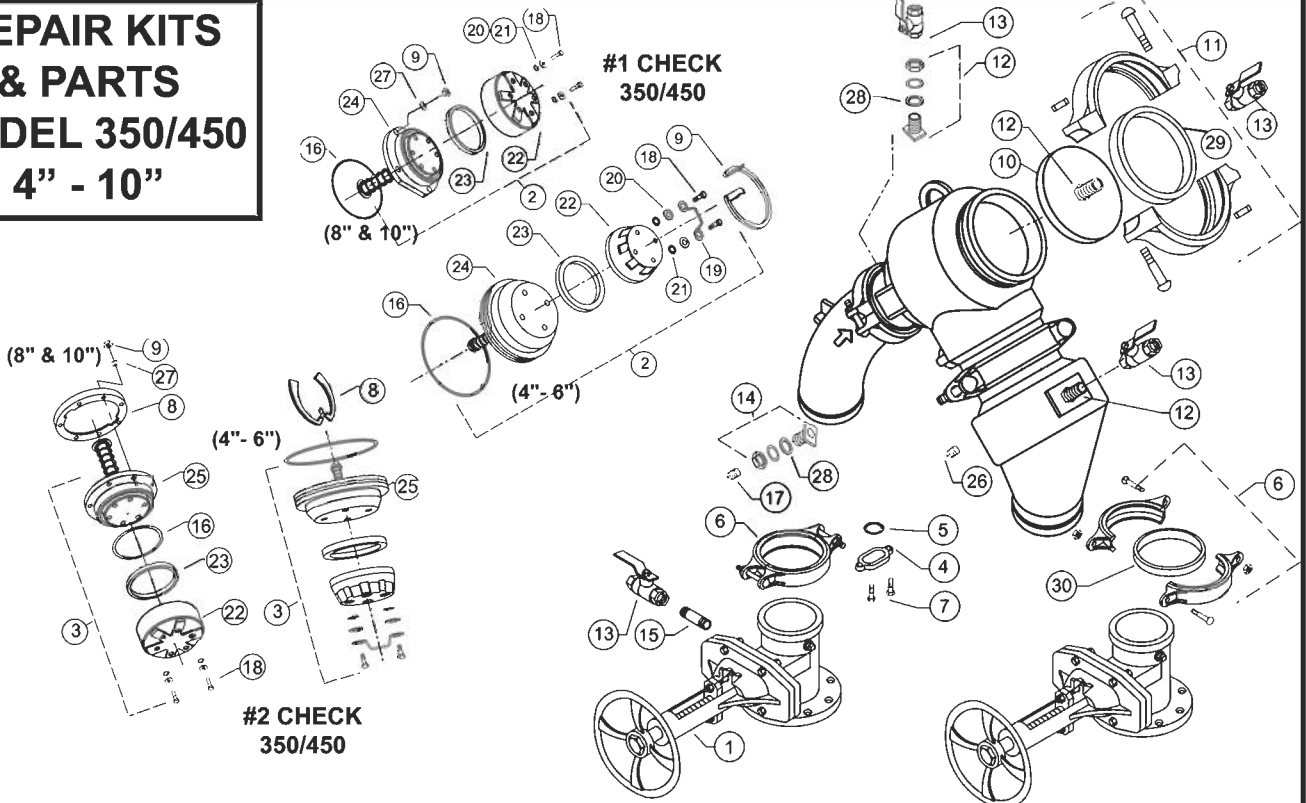
#2 CHECK ASSEMBLY
(350 & 450 2 1/2" & 3")

NO.	DESCRIPTION	(350 & 450) 2-1/2"	(350 & 450) 3"
1	GATE VALVE, NRS	212-48	3-48
	GATE VALVE, OS&Y	212-48OSY	3-48OSY
	GATE VALVE, OS&Y (FXG)	212-48OSYGXF	3-48OSYGXF
2	BOLT, FLANGE	558-11D	558-11D
3	NUT, FLANGE	558-9	558-9
4	GASKET, FLANGE	557-13	558-13
5	O-RING, COVER PLATE	031N	031N
6	COVER PLATE	558-3A-020F	558-3A-020F
7	BOLT, COVER PLATE	554-11A	554-11A
8	SEAT RETAINER #2	3507-14G	3507-14G
9	SEAT RETAINER #1	3507-14F	3507-14F
10	COVER	3507-3C	3507-3C
11	COVER RETAINER ASSY	5-23	5-23
12	BULKHEAD FITTING ASSY	BHF1C-100	BHF1C-100
13	BALL VALVE	12-850	12-850
14	COUPLING	12-51	12-51
15	NIPPLE, LONG	558-21B	558-21B
16	O-RING	245N	245N
17	PLUG	558-7	558-7
18	NUT, BOLT, POPPET RETAINER	3507-9	3507-9
19	HANDLE, #1 POPPET ASSY	3507-14E	3507-14E
20	WASHER	3507-14D	3507-14D
21	O-RING	111N	111N
22	POPPET RETAINER	3507-14	3507-14
23	SEAL RING	3507-12	3507-12
24	SEAT ASSEMBLY, #1 POPPET	3507-180	3507-180
25	SEAT ASSEMBLY, #2 POPPET	3507-180A	3507-180A
26	#1 CHECK ASSEMBLY	3507-300	3507-300
27	#2 CHECK ASSEMBLY	3507-300A	3507-300A
28	BULKHEAD FITTING ASSY	BHF1B-100	BHF1B-100
29	PLUG	558-7	558-7
30	BALL VALVE	12-850M	12-850M
31	GASKET, COVER RETAINER	5-23-13	5-23-13
32	BULKHEAD FITTING GASKET	BHF1-13	BHF1-13



MODEL 350/450 (2-1/2" - 3")

REPAIR KITS & PARTS MODEL 350/450 4" - 10"



#RK4-350 4" REPAIR KIT

PART NO.	QTY.	DESCRIPTION
3509-12	2	SEAL RING
353N	2	O-RING
109N	8	O-RING

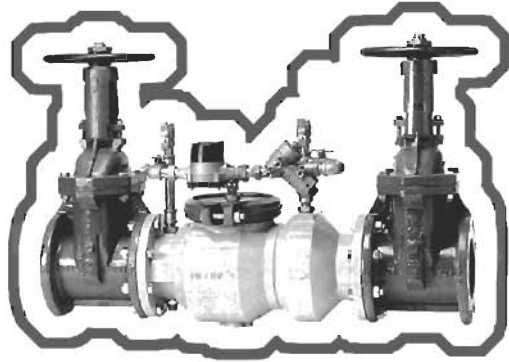
#RK6-350 6" REPAIR KIT

PART NO.	QTY.	DESCRIPTION
3510-12	2	SEAL RING
364N	2	O-RING
204N	8	O-RING

#RK6-350 8" & 10" REPAIR KIT

PART NO.	QTY.	DESCRIPTION
3511-12	2	SEAL RING
273N	2	O-RING
204N	12	O-RING

NO.	DESCRIPTION	4"	6"	8"	10"
1	GATE VALVE, NRS (GXF)	4-48GXF	6-48GXF	8-48GXF	10-48OSY
	GATE VALVE, OS&Y (GXF)	4-48OSYGXF	6-48OSYGXF	8-48OSYGXF	10-48OSYGXF
	GATE VALVE, OS&Y (GXG)	4-48OSYG	6-48OSYG	8-48OSYG	10-48OSYG
	GATE VALVE, NRS (GXG)	4-48G	6-48G	8-48G	10-48G
2	#1 CHECKASSEMBLY	3509-300A	3510-300A	3512-300A	3512-300A
3	#2 CHECKASSEMBLY	3509-300A	3510-300B	3512-300B	3512-300B
4	COVER PLATE	4507-3A-010F	4507-3A-010F	511-3A-010F	511-3A-010F
5	O-RING, COVER PLATE	032N	032N	142N	142N
6	GROOVED COUPLING	4-23	6-23	8-23	10-23
7	BOLT, COVER PLATE	554-11A	554-11A	957-11	957-11
8	SEAT RETAINER ASSEMBLY #2	3509-140	3510-140	3511-14DSS	3511-14DSS
9	SEAT RETAINER #1	3509-14B	3510-14B	3511-9 (NUT)	3511-9 (NUT)
10	COVER	3509-3C	3510-3C	3511-3C	3511-3C
11	COVER RETAINER ASSEMBLY	6-23	8-23	12-23	12-23
12	BULKHEAD FITTING ASSEMBLY	BHF1C-100	BHF2B-100	BHF2B-100	BHF2B-100
13	BALL VALVE	12-850	34-850	34-850	34-850
14	BULKHEAD FITTING ASSEMBLY	BHF1B-100	BHF1B-100	BHF2C-100	BHF2C-100
15	NIPPLE, LONG	12X2-21B	5510-21B	5510-21B	5510-21B
16	O-RING	353N	364N	273N	273N
17	PLUG	558-7	558-7	558-7	558-7
18	BOLT, POPPET RETAINER	558-11E	5510-11A	3511-11	3511-11
19	HANDLE, #1 POPPET ASSEMBLY	3509-6	3510-6	N/A	N/A
20	WASHER	3509-14C	3510-14C	3510-14C	3510-14C
21	O-RING	109N	204N	204N	204N
22	POPPET RETAINER	3509-14	3510-14	3511-14	3511-14
23	SEAL RING	3509-12	3510-12	3511-12	3511-12
24	SEAT ASSEMBLY, #1 POPPET	3509-180	3510-180	3512-180A	3512-180A
25	SEAT ASSEMBLY, #2 POPPET	3509-180	3510-180	3512-180B	3512-180B
26	PLUG/CAP	558-7	34-3B	558-7	558-7
27	WASHER	N/A	N/A	3511-14E	3510-14C
28	GASKET	BHF1-13	BHF1-13	BHF1-13	BHF1-13
29	GASKET, COVER RETAINER	6-23-13	8-23-13	12-23-13	12-23-13
30	GASKET, GROOVED COUPLING	4-23-13	6-23-13	8-23-13	10-23-13



WILKINS

a ZURN company

Model 350DA Double Detector Check Valve Assembly 2-1/2" to 10"

FEATURES

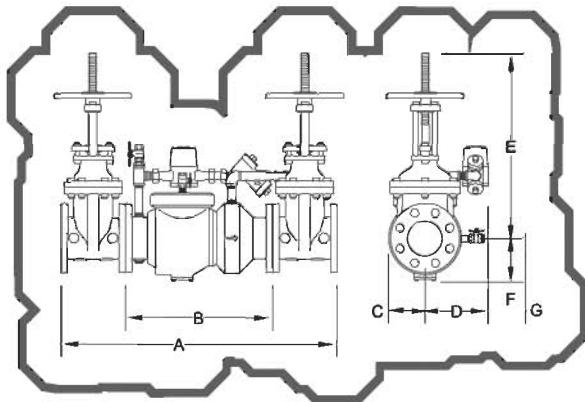
Maximum working water pressure	175 PSI
Maximum working water temperature	140°F
Hydrostatic test pressure	350 PSI
End connections (Grooved for steel)	AWWA C606
(Flanged)	ANSI B16.1
	Class 125

OPTIONS

- with OS & Y gate valves (standard)
- L - less shut-off valves (flanged body connections)
- LM - less water meter
 - with remote reading meter
 - with gpm meter (standard)
 - with cu ft/min meter
- G - with groove end gate valves
- FG - with flanged inlet gate connection and grooved outlet gate connection

ACCESSORIES

- Thermal expansion tank (Model WXTP)
- OS & Y Gate valve tamper switch (OSY-40)



DIMENSIONS & WEIGHTS

sz.	A	B LESS GATES		C	D	OS&Y		E	F	G	GATE VALVES	
		OPEN	CLOSED			NRS	w/o OS&Y					
2 1/2	31	15 7/8	3 3/4	9	16 3/8	13 7/8	11 3/8	3 1/2	7 1/4	68	178	
3	32	15 7/8	3 3/4	9	18 7/8	15 5/8	12 3/8	3 1/2	7 1/4	68	198	
4	37 5/8	19 1/2	4 1/2	9	22 3/4	18 1/4	14 3/4	6	8	106	296	
6	44 3/4	23 1/2	5 1/2	10 1/2	30 1/8	23 3/4	19	7	10	180	480	
8	60 3/4	37 3/4	10	12	37 3/4	29 1/4	22 1/2	8 1/2	11	374	850	
10	63 3/4	37 3/4	10	12	45 3/4	35 3/8	26 1/2	8 1/2	11	404	1222	

APPLICATION

Designed for installation on potable water connections in fire sprinkler systems to protect against both backsiphonage and backpressure of polluted water into the potable water supply. Model 350DA shall provide protection where a potential health hazard does not exist. Incorporates metered by-pass to detect leaks and unauthorized water use.

STANDARDS COMPLIANCE

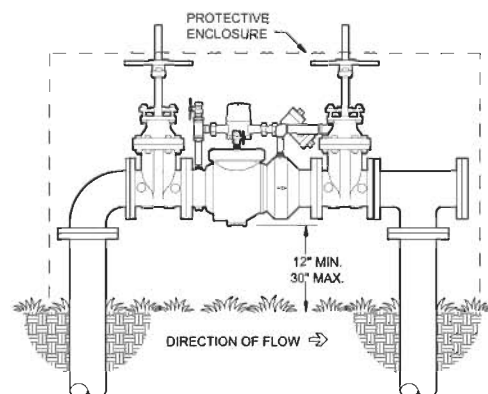
- ASSE® Listed 1048
- CSA® Certified B64.5 (2 1/2" thru 8")
- AWWA Compliant C510
- UL® Classified
- C-UL® Classified
- FM® Approved
- USC FCCC & HR

MATERIALS

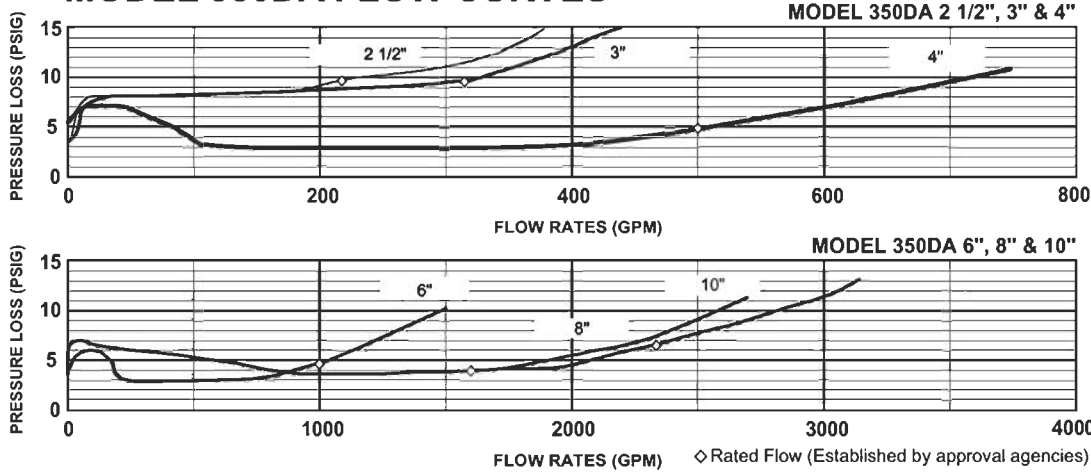
Main valve body	Ductile Iron ASTM A 536 Grade 4
Access covers	Ductile Iron ASTM A 536 Grade 4
Coatings	FDA Approved fusion epoxy finish
Internals	Stainless steel, 300 Series NORYL™, NSF Listed
Fasteners	Stainless Steel, 300 Series
Elastomers	EPDM (FDA approved) Buna Nitrile (FDA approved)
Polymers	NORYL™, NSF Listed
Springs	Stainless Steel, 300 Series

TYPICAL INSTALLATION

Local codes shall govern installation requirements. Unless otherwise specified, the assembly shall be mounted as shown below, so that no part of the unit may be at any time submerged.



MODEL 350DA FLOW CURVES



REPAIR KITS - MODEL 350DA & 450DA

#RK212-350DA 2-1/2" & 3" RUBBER REPAIR KIT

PART NO.	DESCRIPTION
RK34-950XLR	Repair Kit for Model 950/975, 3/4"
RK212-350	Repair Kit for Model 350/375, 2-1/2" & 3"

#RK4-350DA 4" RUBBER REPAIR KIT

PART NO.	DESCRIPTION
RK34-950XLR	Repair Kit for Model 950/975, 3/4"
RK4-350	Repair Kit for Model 350/375, 4"

#RK6-350DA 6" RUBBER REPAIR KIT

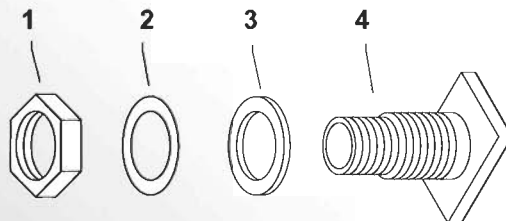
PART NO.	DESCRIPTION
RK34-950XLR	Repair Kit for Model 950/975, 3/4"
RK6-350	Repair Kit for Model 350/375, 6"

#RK8-350DA 8" & 10" RUBBER REPAIR KIT

PART NO.	DESCRIPTION
RK34-950XLR	Repair Kit for Model 950/975, 3/4"
RK8-350	Repair Kit for Model 350/375, 8" & 10"

See Model 350 Parts Pages
for Parts Break-Downs &
Repair Kits for the Main Body.

Capacity thru Schedule 40 Pipe (GPM) 350DA/450DA				
Pipe size	5 ft/sec	7.5 ft/sec	10 ft/sec	15 ft/sec
2 1/2"	75	112	149	224
3"	115	173	230	346
4"	198	298	397	595
6"	450	675	900	1351
8"	780	1169	1559	2339
10"	1229	1843	2458	3687



350DA & 450DA BULKHEAD FITTINGS

ITEM NO.	DESCRIPTION	4-6"	8-10"
		BHF1B-100	BHF2C-100
1	NUT	BHF1-9-010F	BHF2-9-010F
2	WASHER	BHF1-14	BHF2-14
3	GASKET	BHF1-13	BHF1-13
4	FITTING	BHF1-19B-010F	BHF2-19C-010F

American Backflow Specialties

www.americanbackflow.com

(800) 66-BKFLO

(619) 527-2525

Fax: (619) 527-2527