

WILKINS

a ZURN company

Model 475 / 475V Reduced Pressure Principle 2-1/2" to 10"

FEATURES

Maximum working water pressure	175 PSI
Maximum working water temperature	140°F
Hydrostatic test pressure	350 PSI
End connections (Grooved for steel pipe)	AWWA C606-87
(Flanged)	ANSI B16.1
	Class 125

OPTIONS

- with NRS shut-off valves (standard)
- FS - with cast iron wye type strainer (flanged only)
- FSC - with epoxy coated wye type strainer (flanged only)
- G - with groove end gate valves
- FG - with flanged inlet gate connection and grooved outlet gate connection
- L - less shut-off valves (grooved body connections)
- MS - with Integral Relief Valve Monitor Switch
- OSY - with OS & Y gate valves
- V - vertical flow up configuration

ACCESSORIES

- Air gap (see spec sheet BF-AG)
- Thermal expansion tank (Model WXTP)
- Valve setter (Model FLS or MJS or MJFS)
- Gate valve tamper switch (OSY-40)
- Electronic Solenoid Timer (Model EST)
- QT-SET Quick Test Fitting Set

APPLICATION

Designed for installation on potable water lines to protect against both backsiphonage and backpressure of contaminated water into the potable water supply. Assembly shall provide protection where a potential health hazard exists. The Model 475 is for applications requiring vertical flow up and vertical flow down. The Model 475V is for applications requiring vertical flow up.

STANDARDS COMPLIANCE

(unless otherwise noted, applies to sizes 4" thru 8")

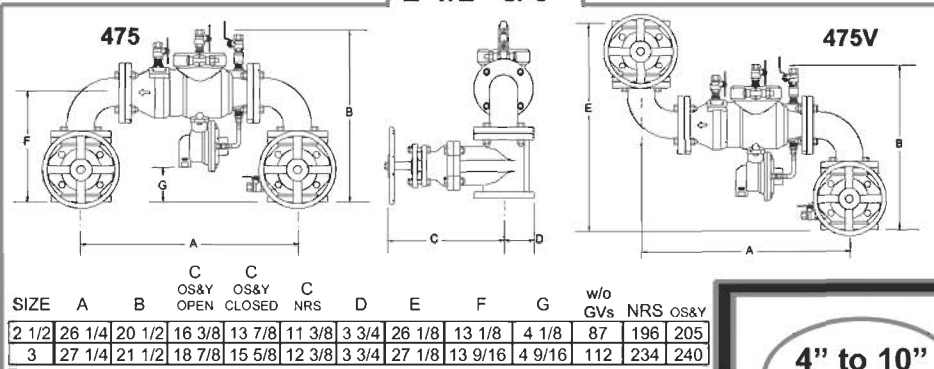
- ASSE® Listed 1013
- AWWA Compliant C511
- CSA® Certified (2-1/2"- 6")
- IAPMO® Listed (2-1/2"- 8" Horiz.)(2-1/2"- 6" Vert.)
- UL® Classified (2-1/2"- 10")
- C-UL® Classified (2-1/2"- 10")
- FM® Approved
- USC FCCC & HR (2-1/2"- 6")(8" Horizontal)

MATERIALS

Main valve body	Ductile Iron ASTM A 536 Grade 4
Access covers	Ductile Iron ASTM A 536 Grade 4
Coatings	FDA Approved fusion epoxy finish
Internals	Stainless steel, 300 Series NORYL™, NSF Listed
Fasteners	Stainless Steel, 300 Series
Elastomers	EPDM (FDA approved) Buna Nitrile (FDA approved)
Polymers	NORYL™, NSF Listed
Springs	Stainless steel, 300 series

DIMENSIONS & WEIGHTS

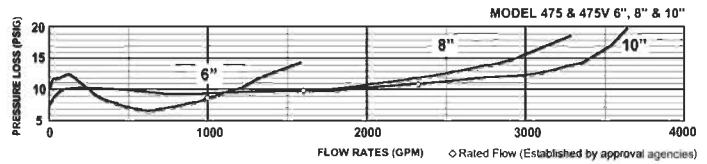
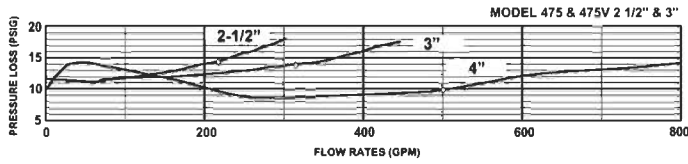
2-1/2" & 3"



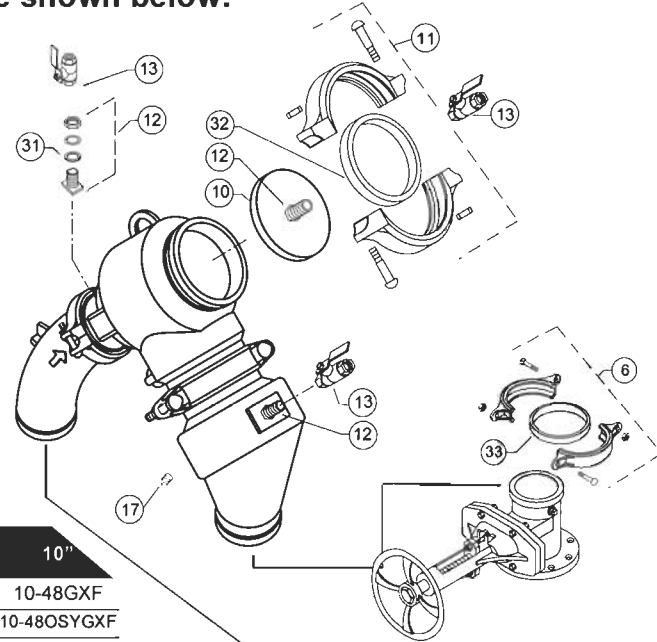
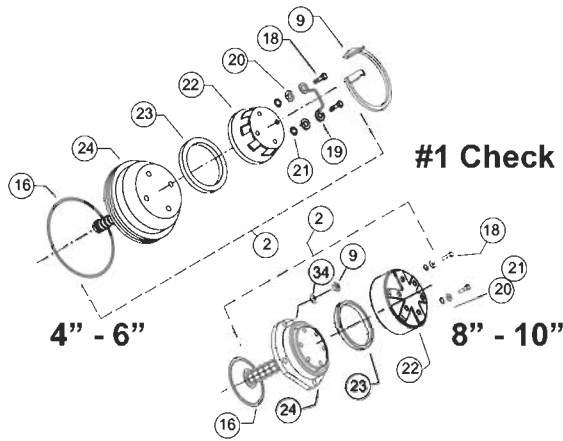
4" to 10"

SIZE	A	A1	A1	B	B	C OS&Y OPEN	C OS&Y CLOSED	C NRS	D	E	w/o GV's	NRS	OS&Y
4" 475	18 5/16	31 5/16	29 5/16	30	21	22 3/4	18 1/4	14 3/4	23 1/4	5	97	277	287
475V	18 15/16	N/A	N/A	36 1/2	18 1/2	22 3/4	18 1/4	14 3/4	21	5	97	277	287
6" 475	18 11/16	34 3/4	32 3/4	35 1/2	25	30 1/8	23 3/4	19	26	6	171	455	471
475V	21	N/A	N/A	42	21	30 1/8	23 3/4	19	22	6	171	455	471
8" 475	29	47	44 5/8	46	34 7/16	37 3/4	29 1/4	22 1/2	33 1/4	10	405	857	881
475V	30 5/16	N/A	N/A	53 1/2	30 5/16	37 3/4	29 1/4	22 1/2	37 7/8	10	405	857	881
10" 475	29	51	47	47 1/2	34 7/16	45 3/4	35 3/8	26 1/2	33 1/4	10	423	1051	1097
475V	30 5/16	N/A	N/A	56 1/2	30 5/16	45 3/4	35 3/8	26 1/2	39 3/8	10	423	1051	1097

FLOW CURVES

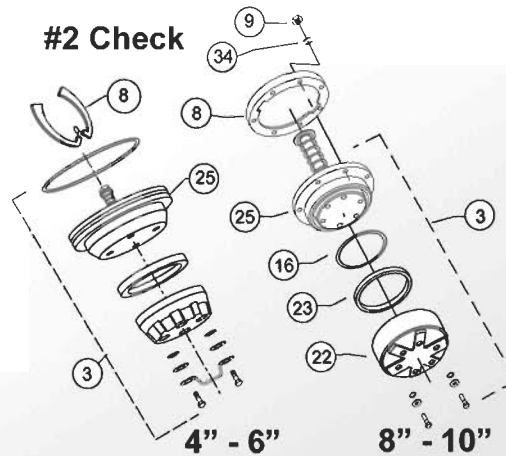
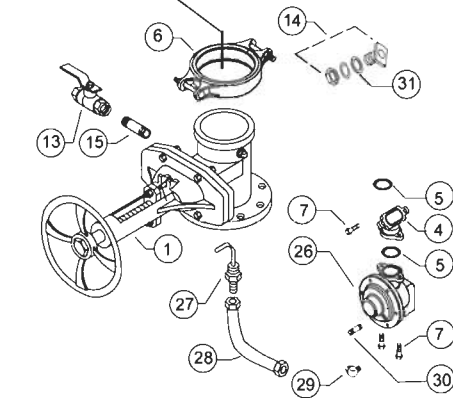


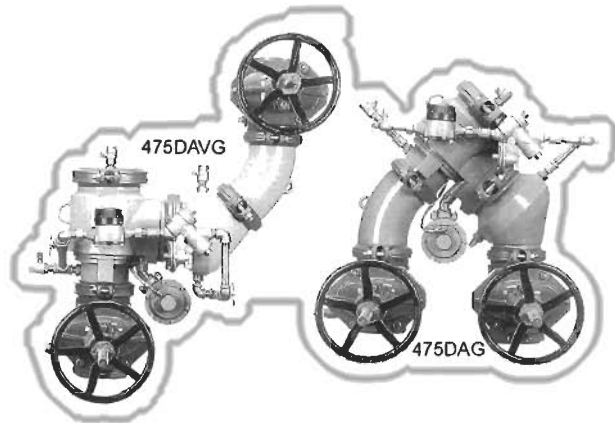
Model 475(V) 2-1/2" & 3" Repair Kits & Parts Break-downs: See Model 375 Parts Pages.
Model 475(V) 4" to 10" Repair Kits: See Model 375 Parts Pages.
Model 475(V) 4" to 10" Parts Breakdowns are shown below:



Model 475(V) 4" to 10" Individual Parts

ITEM NO.	DESCRIPTION	4"	6"	8"	10"
1	GATE VALVE, NRS (GXF)	4-48GXF	6-48GXF	8-48GXF	10-48GXF
	GATE VALVE, OS&Y (GXF)	4-48OSYGXF	6-48OSYGXF	8-48OSYGXF	10-48OSYGXF
	GATE VALVE, OS&Y (GXG)	4-48OSYG	6-48OSYG	8-48OSYG	10-48OSYG
	GATE VALVE, NRS (GXG)	4-48G	6-48G	8-48G	10-48G
2	#1 CHECK ASSEMBLY	3709-300	3710-300	3712-300	3712-300
3	#2 CHECK ASSEMBLY	3509-300A	3510-300B	3512-300B	3512-300B
4	CU ELBOW	4707-52-010F	4707-52-010F	4711-52-010F	4711-52-010F
5	O-RING, ELBOW	032N	032N	142N	142N
6	GROOVED COUPLING	4-23	6-23	8-23	10-23
7	BOLT	554-11A	554-11A	957-11	957-11
8	SEAT RETAINER ASSEMBLY #2	3509-140	3510-140	3511-14DSS	3511-14DSS
9	SEAT RETAINER #1	3509-14B	3510-14B	3511-9 (NUT)	3511-9 (NUT)
10	COVER	3509-3C	3510-3C	3511-3C	3511-3C
11	COVER RETAINER ASSEMBLY	6-23	8-23	12-23	12-23
12	BULKHEAD FITTING ASSEMBLY	BHF1C-100	BHF2B-100	BHF2B-100	BHF2B-100
13	BALL VALVE	12-850	34-850	34-850	34-850
14	BULKHEAD FITTING ASSEMBLY	BHF1B-100	BHF1B-100	BHF2C-100	BHF2C-100
15	NIPPLE, LONG	12X2-21B	5510-21B	5510-21B	5510-21B
16	O-RING, SEAT ASSEMBLY	353N	364N	273N	273N
17	PLUG/CAP	558-7	34-3B	558-7	558-7
18	BOLT, POPPET RETAINER	558-11E	5510-11A	3511-11	3511-11
19	HANDLE, #1 POPPET ASSEMBLY	3509-6	3510-6	N/A	N/A
20	WASHER	3509-14C	3510-14C	3510-14C	3510-14C
21	O-RING	109N	204N	204N	204N
22	POPPET RETAINER	3509-14	3510-14	3511-14	3511-14
23	SEAL RING	3509-12	3510-12	3511-12	3511-12
24	SEAT ASSEMBLY, #1 POPPET	3709-180	3710-180	3712-180	3712-180
25	SEAT ASSEMBLY, #2 POPPET	3509-180	3510-180	3512-180B	3512-180B
26	CONTROL UNIT ASSEMBLY	3707-CU	3707-CU	3711-CU	3711-CU
27	PITOT TUBE ASSEMBLY	57510-360	57510-360	57510-360	57510-360
28	SENSING TUBE	3710-36	3710-36	4710-36	4710-36
29	ELBOW	3707-38B	3707-38B	3707-38B	3707-38B
30	NIPPLE	14X1.5-21B	14X1.5-21B	14X1.5-21B	14X1.5-21B
31	BULKHEAD FITTING, GASKET	BHF1-13	BHF1-13	BHF1-13	BHF1-13
32	GASKET, COVER RETAINER	6-23-13	8-23-13	12-23-13	12-23-13
33	GASKET, GROOVED COUPLING	4-23-13	8-23-13	8-23-13	10-23-13
34	WASHER	N/A	N/A	3511-14E	3510-14C





WILKINS

a ZURN company

Model 475DA / 475DAV Reduced Pressure Detector Assembly 4" to 10"

APPLICATION

Designed for installation on potable water lines in fire sprinkler systems to protect against both backsiphonage and backpressure of contaminated water into the potable water supply. Assembly shall provide protection where a potential health hazard exists.

STANDARDS COMPLIANCE

- ASSE® Listed 1047 (4" THRU 8")
- UL® Classified (4" THRU 10")
- C-UL® Classified (4" THRU 10")
- FM® Approved (4" THRU 8")
- Approved by the Foundation for Cross Connection Control and Hydraulic Research at the University of Southern California (4" 475DAV and 4" & 6" 475DA)

FEATURES

Maximum working water pressure	175 PSI
Maximum working water temperature	140°F
Hydrostatic test pressure	350 PSI
End connections (Grooved for steel pipe)	AWWA C606-87
(Flanged)	ANSI B16.1
	Class 125

OPTIONS

- with OS & Y gate valves (standard)
- L - less shut-off valves (grooved body connections)
- LM - less water meter
 - with remote reading meter
 - with gpm meter (standard)
 - with cu ft/min meter
- V - vertical flow up configuration
- G - with groove end gate valves
- FG - with flanged inlet gate connection and grooved outlet gate connection
- FS - with cast iron wye type strainer (flanged only)
- FSC - with epoxy coated wye type strainer (flanged only)
- MS - with integral Relief Valve Monitor Switch

ACCESSORIES

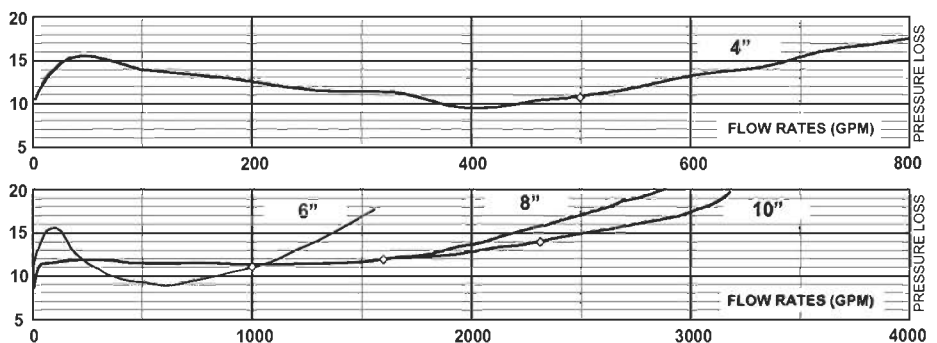
- Air gap (see spec sheet BF-AG)
- Thermal expansion tank (Model WXTP)
- Valve setter (Model FLS or MJS or MJFS)
- Gate valve tamper switch (OSY-40)
- QT-SET Quick Test Fitting Set

For Repair Kits & Parts Break-Downs, See Model 375DA.

MATERIALS

Main valve body	Ductile Iron ASTM A 536 Grade 4
Access covers	Ductile Iron ASTM A 536 Grade 4
Coatings	FDA Approved fusion epoxy finish
Fasteners	Stainless Steel, 300 Series
Elastomers	EPDM (FDA approved)
	Buna Nitrile (FDA approved)
Polymers	NORYL™, NSF Listed
Springs	Stainless steel, 300 series

FLOW CHARACTERISTICS



DIMENSIONS & WEIGHTS

SIZE	A	B		C	OS	Y&C	OS&Y	D	WEIGHT	
		with gates	less gates						less gates OS&Y	OS&Y
4" 475DA	18 5/16	30	21	22 3/4	18 1/4	23 3/16	113	303		
4" 475DAV	18 7/8	36 1/2	18 1/2	22 3/4	18 1/4	21	113	303		
6" 475DA	18 11/16	35 1/2	25	30 1/8	23 3/4	26	187	487		
6" 475DAV	21	42	21	30 1/8	23 3/4	22	187	487		
8" 475DA	29	46	34 7/16	37 3/4	29 1/4	33 1/4	421	897		
8" 475DAV	30 5/16	53 1/2	30 5/16	37 3/4	29 1/4	37 7/8	421	897		
10" 475DA	29	47 1/2	34 7/16	45 3/4	35 3/8	33 1/4	439	1113		
10" 475DAV	30 5/16	56 1/2	30 5/16	45 3/4	35 3/8	39 3/8	439	1113		

