

WILKINS

a ZURN company

Model 950XL Double Check Valve Assembly 3/4" to 2"

FEATURES

Maximum working water pressure	175 PSI
Maximum working water temperature	180°F
Hydrostatic test pressure	350 PSI
End connections Threaded	ANSI B1.20.1

OPTIONS

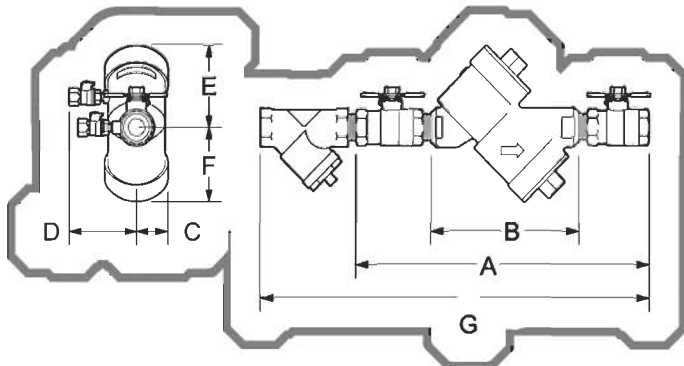
- with full port QT ball valves (standard)
- L - less ball valves
- U - with union ball valves
- S - with bronze "Y" type strainer
- TCU - with test cocks "vertical" up
- V - with union swivel elbows (3/4" & 1")
- OSY - with OS & Y gate valves
- FDC - with fire hydrant connection (2" only)
- FT - with integral male 45° flare SAE test fitting

ACCESSORIES

- Repair kit (rubber only)
- Thermal expansion tank (Model WXTP)
- QT-SET Quick Test Fitting Set

MATERIALS

Main valve body	Cast Bronze ASTM B 584
Access covers	Cast Bronze ASTM B 584
Internals	Stainless Steel, 300 Series
Elastomers	Silicone (FDA approved) Buna Nitrile (FDA approved)
Polymers	Noryl™, NSF Listed
Springs	Stainless steel, 300 series



DIMENSIONS & WEIGHTS

SIZE	A	UNION BALL	B	LESS BALL	C	D	E	F	G	LESS BALL	WITH BALL
3/4	11 1/4	12 1/2	7	1 1/2	3	3 1/2	3	3	15	5	7
1	13	13 3/4	7	1 1/2	3	3 1/2	3	3	17 3/4	8	12
1 1/4	15 1/2	18 1/2	10 9/16	2	3 1/2	4 1/2	4 1/2	4 1/2	21 1/2	16	22
1 1/2	17 1/8	19 1/8	10 9/16	2	3 1/2	4 1/2	4 1/2	4 1/2	22 3/4	16	22
2	18 1/4	20	10 9/16	2	3 1/2	4 1/2	4 1/2	4 1/2	25 1/8	16	28

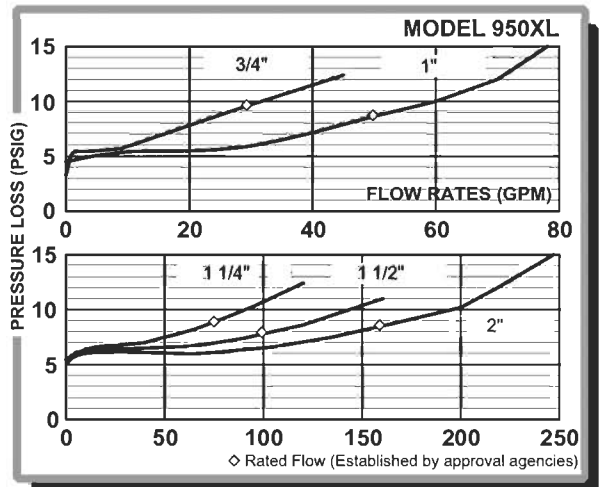
STANDARDS COMPLIANCE (All Horizontal approved. Vertical approved as shown below.)

- ASSE® Listed 1015 (vertical 3/4", 1 1/4", 1 1/2" & 2")
- IAPMO® Listed (vertical 1 1/4"-2")
- CSA® Listed (vertical 3/4", 1 1/4", 1 1/2" & 2")
- AWWA Compliant C510 (vertical 3/4")
- UL® Classified (less shut-off valves only)
- C-UL® Classified (less shut-off valves only)
- **USC FCCC & HR** (vertical 3/4")
- City of Los Angeles Approved (vertical 1 1/4"-2")

APPLICATION

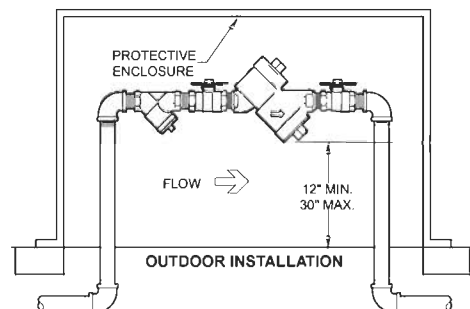
Designed to protect potable water lines against back-siphonage and backpressure from polluted (non-health-hazard) water.

FLOW CURVES



TYPICAL INSTALLATION

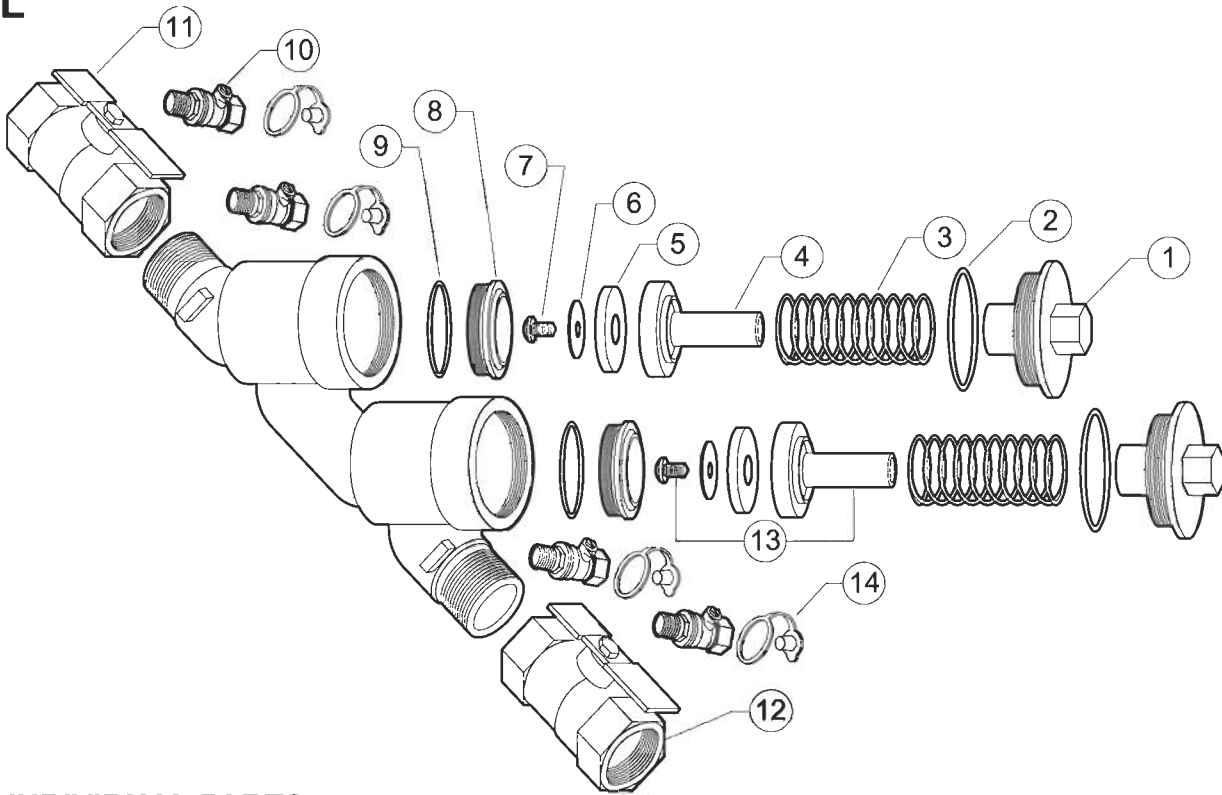
Local codes govern installation requirements. Assembly should be mounted at least 12" and no more than 30" above adequate drains, with sufficient clearance for testing and maintenance. No part of the unit may be submerged.



MODEL
950XL

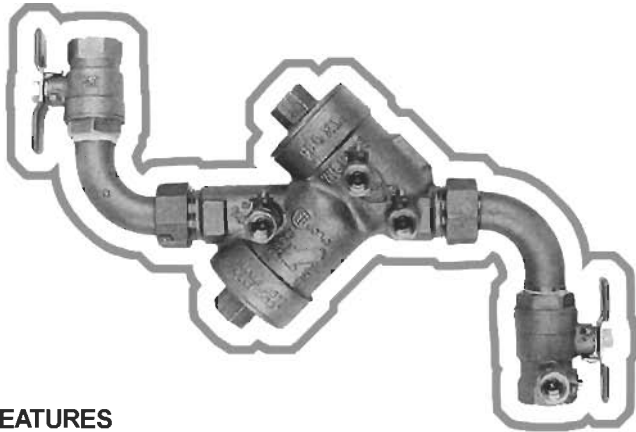
REPAIR KITS

NO. RK34-950XL			REPAIR KIT COMPLETE Model 950XL 3/4" & 1" Only			NO. RK114-950XL			REPAIR KIT COMPLETE Model 950XL 1-1/4", 1-1/2", 2" Only		
PART NO.	QTY.	DESCRIPTION	PART NO.	QTY.	DESCRIPTION	PART NO.	QTY.	DESCRIPTION	PART NO.	QTY.	DESCRIPTION
952-12S	2	SEAL RING	954-12S	2	SEAL RING						
136N	2	O-RING, COVER	153N	2	O-RING, COVER						
952-33	2	CHECK SPRING	554-33	2	CHECK SPRING						
NO. RK34-950XLR			RUBBER REPAIR KIT Model 950XL 3/4" & 1" Only			NO. RK114-950XLR			RUBBER REPAIR KIT Model 950XL 1-1/4", 1-1/2", 2" Only		
PART NO.	QTY.	DESCRIPTION	PART NO.	QTY.	DESCRIPTION	PART NO.	QTY.	DESCRIPTION	PART NO.	QTY.	DESCRIPTION
952-12S	2	SEAL RING	954-12S	2	SEAL RING						
136N	2	O-RING, COVER	153N	2	O-RING, COVER						



INDIVIDUAL PARTS

ITEM NO.	DESCRIPTION	3/4"	1"	1-1/4"	1-1/2"	2"
1	CHECK COVER	952-3-010F	952-3-010F	954-3-010F	954-3-010F	954-3-010F
2	O-RING, COVER	136N	136N	153N	153N	153N
3	CHECK SPRING	952-33	952-33	554-33	554-33	554-33
4	POPPET	952-30	952-30	954-30	954-30	954-30
5	SEAL RING	952-12S	952-12S	954-12S	954-12S	954-12S
6	SEAL RING RETAINER	952-14	952-14	954-14	954-14	954-14
7	RETAINING BOLT	952-11	952-11	952-11	952-11	952-11
8	CHECK SEAT	952-18T	952-18T	954-18T	954-18T	954-18T
9	O-RING, CHECK SEAT	125N	125N	142N	142N	142N
10	TEST COCK	18-860	18-860	14-860	14-860	14-860
11	BALL VALVE, TAPPED	34-850T	1-850T	114-850T	112-850T	2-850T
12	BALL VALVE	34-850	1-850	114-850	112-850	2-850
13	POPPET ASSEMBLY	952-300S	952-300S	954-300S	954-300S	954-300S
14	TEST COCK CAP PLUG	861B-3P	861B-3P	861B-3P	861B-3P	861B-3P
	CHECK SEAT TOOL	972-SEATTOOL		974-SEATTOOL		



WILKINS

a ZURN company

Model 950XLV Double Check Valve Assembly with 90° Union Elbows 3/4" & 1"

FEATURES

Maximum working water pressure	175 PSI
Maximum working water temperature	180°F
Hydrostatic test pressure	350 PSI
End connections Threaded	ANSI B1.20.1

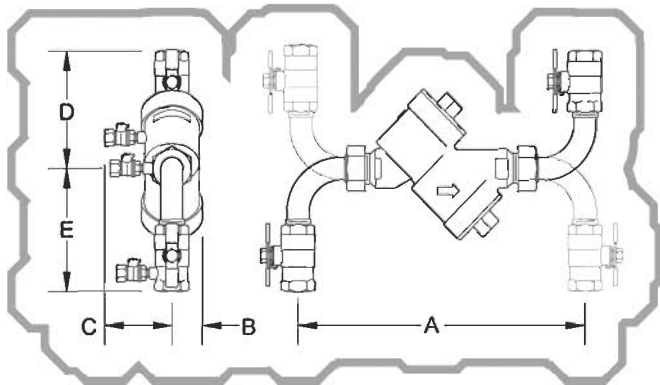
OPTIONS

(Suffixes can be combined)

- with full port QT ball valves (standard)
- S - with bronze "Y" type strainer
- PRE-SET - with strainer, regulator or check valve

ACCESSORIES

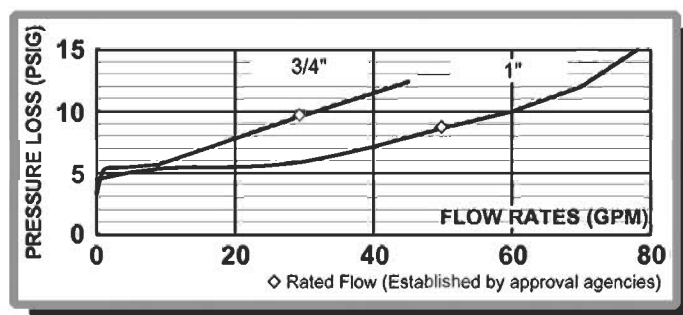
- Repair kit (rubber only)
- Thermal expansion tank (Model WXTP)
- QT-SET Quick Test Fitting Set



DIMENSIONS & WEIGHTS

SIZE	A	B	C	D	E	
3/4	11 1/2	2 1/8	3	4 3/4	5	11
1	11 1/2	2 1/8	3	5	5 1/4	13

FLOW CURVES



APPLICATION

Designed for installation on potable water lines to protect against both backsiphonage and backpressure of polluted water into the potable water supply. Assembly shall provide protection where a potential health hazard does not exist. Swivel union connections allow for vertical up-up or up-down configuration.

STANDARDS COMPLIANCE

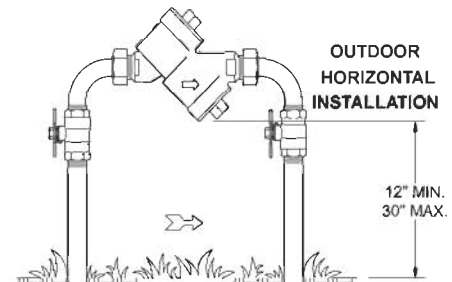
- ASSE® Listed 1015
- IAPMO® Listed (size 3/4")
- AWWA Compliant C510 (size 3/4")
- City of Los Angeles Approved

MATERIALS

Main valve body	Cast Bronze ASTM B 584
Access covers	Cast Bronze ASTM B 584
Elbows	Cast Bronze ASTM B 584
Fasteners	Stainless Steel, 300 Series
Elastomers	Silicone (FDA approved) Buna Nitrile (FDA approved)
Polymers	Noryl™, NSF Listed
Springs	Stainless steel, 300 series

TYPICAL INSTALLATION

Local codes govern installation requirements. Assembly should be mounted at least 12" and no more than 30" above adequate drains, with sufficient clearance for testing and maintenance. No part of the unit may be submerged.



See Model 950XL
for Repair Kits
& Parts