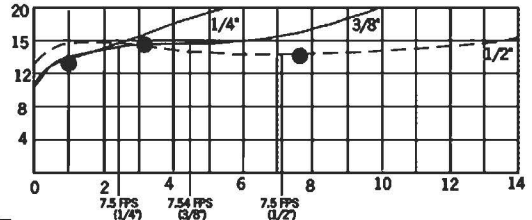
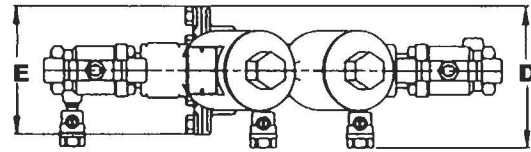
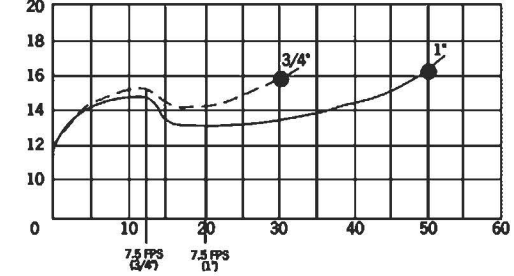


FLOW CURVES

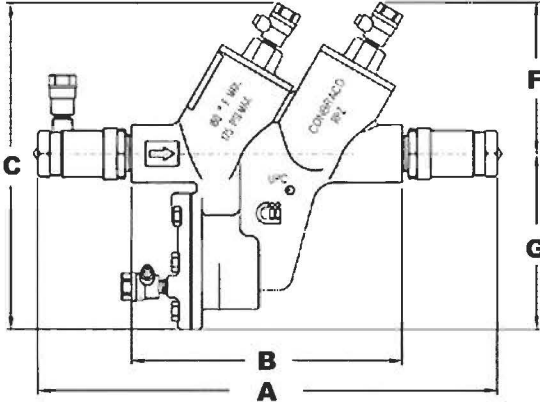


PRESSURE LOSS (PSI)



Body Size	1/4"	3/8"	1/2"	3/4"	1"
A	10-1/2	10-1/2	10-1/2	13-1/2	15-1/4
B	5-3/4	5-3/4	5-3/4	7-15/16	7-15/16
C	5-13/16	5-13/16	5-13/16	8-3/8	8-3/8
D	3-5/8	3-5/8	3-5/8	4-3/4	4-3/4
E	2-5/8	2-5/8	2-5/8	4	4
F	2-1/8	2-1/8	2-1/8	3-1/4	3-1/4
G	3-3/4	3-3/4	3-3/4	5-1/8	5-1/8
Test Cocks	1/8x1/4 NPT	1/8x1/4NPT	1/8x1/4NPT	1/8x1/4NPT	1/8x1/4NPT
Net Wgt. (w/o Ball Valves)	4-1/4	4-1/4	4-1/8	8-1/4	8-1/8
Net Wgt. (with Ball Valves)	5-1/2	5-1/2	5-3/8	10-3/4	11
Shipping Wgt. (w/o Ball Valves)	5-1/8	5-1/8	5	9-3/4	9-5/8
Shipping Wgt. (with Ball Valves)	6-3/8	6-3/8	6-1/4	12-1/4	12-3/4

DIMENSIONS



Repair Kits

**Major Repair Kit** 1/4", 3/8", 1/2" 3/4" & 1"  
 4, 5, 6, 7 (2), 8, 9, 10 (2), 11, 12, 13 (2), 14, 18 (2), 19, 20, 21 (2), 22, 24 (2), 25 (2), 26, 27

**Check Valve Repair Kit** 40-003-A2S 40-004-A2S  
 7, 10, 13, 18, 21, 24, 25

**Relief Valve Repair Kit** 40-003-A3S 40-004-A3S  
 4, 5, 6, 8, 9, 11, 12, 14, 19, 20, 22, 26, 27

**Rubber Repair Kit** 40-003-A4S 40-004-A4S  
 8, 9, 10 (2), 11, 12, 13 (2), 25 (2), 27

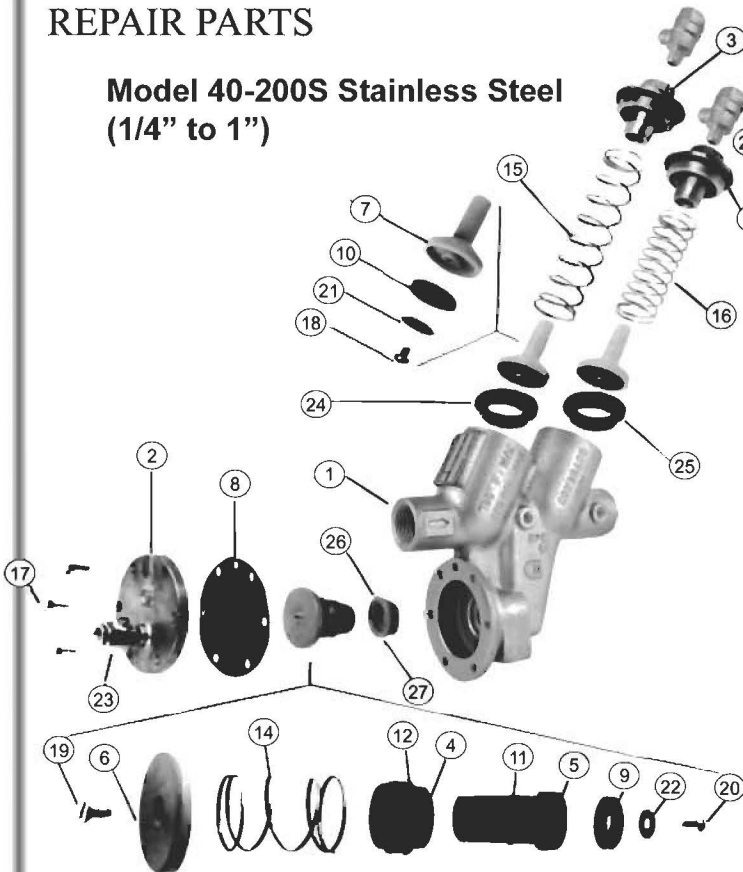
**Replaceable Seat Kit** 40-003-A7S 40-004-A7S  
 24 (2), 25 (2), 26, 27

ITEM DESCRIPTION QTY

ITEM	DESCRIPTION	QTY	Call	Call
1	Body	1	Call	Call
2	R.V. Cover	1	F-3056-05	F-3048-05
3	Cap	2	F-3232-05	F-3233-05
4	R.V. Bushing	1	I-5149-15	I-5105-15
5	R.V. Stem	1	G-3296-00	G-3212-00
6	Diaphragm Plate	1	E-2222-00	D-2506-00
7	Poppet	2	K-3409-00	K-3362-00
8	R.V. Diaphragm	1	D-3088-00	D-3047-00
9	R.V. Seat Disc	1	D-2631-00	D-2829-00
10	Check Seat Disc	2	D-2630-00	D-2503-00
11	Stem O-Ring	1	D-3084-00	D-3051-00
12	Bushing O-Ring	1	D-3085-00	D-3044-00
13	Check Cap O-Ring	2	D-3083-00	D-3052-00
14	R.V. Spring	1	A-1795-00	A-1698-00
15	1st Check Spring	1	A-1797-00	A-1699-00
16	2nd Check Spring	1	A-1794-00	A-1700-00
17	Hex Head Bolt	4(6)	B-1793-00	B-1751-00
18	Screw	2	B-1837-00	B-1748-00
19	Screw	1	B-1749-00	B-1749-00
20	Screw	1	B-1837-00	B-1750-00
21	Retaining Washer	2	E-2223-00	D-2499-00
22	Retaining Washer	1	E-2224-00	D-2498-00
23	Test Cock	3	78-930-01	78-930-01
24	Check Seat	2	L-5152-00	L-4864-00
25	Check O-Ring	2	D-3086-00	D-3046-00
26	R.V. Seat	1	L-5153-00	L-4863-00
27	R.V. O-Ring	1	D-3087-00	D-3045-00

REPAIR PARTS

Model 40-200S Stainless Steel (1/4" to 1")



American Backflow Specialties

www.americanbackflow.com

(800) 66-BKFLO (619) 527-2525 Fax: (619) 527-2527