

# MODEL 910 / 910DA - 4" to 10"

# WILKINS

A ZURN™ Company

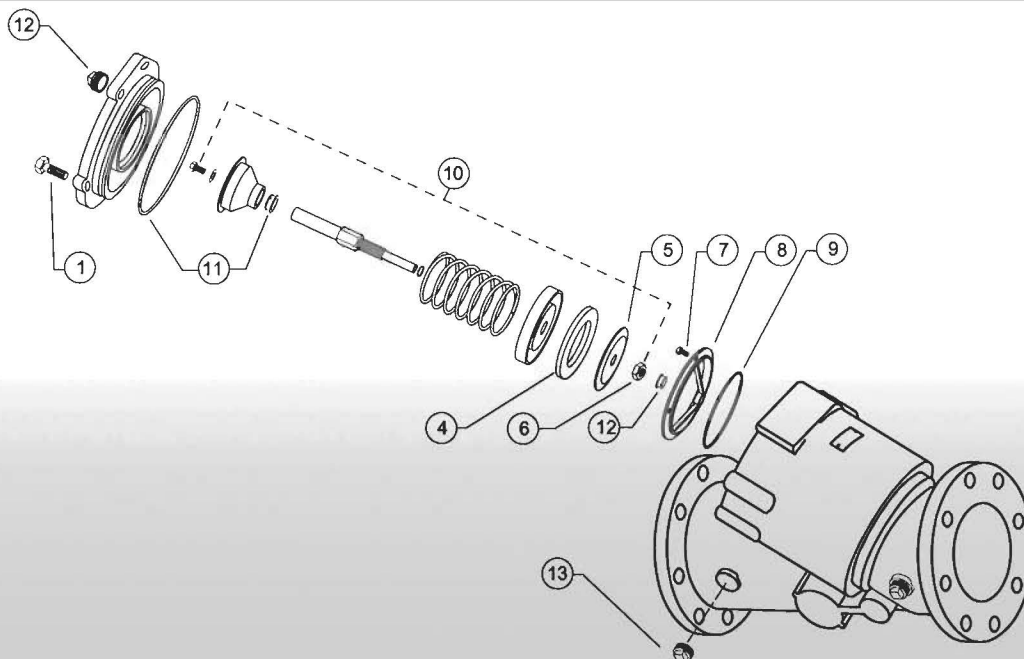
## REPAIR KITS

NO. RK4-910			REPAIR KIT Model 910 4"			NO. RK8-910			REPAIR KIT Model 910 8"		
PART NO.	QTY.	DESCRIPTION	PART NO.	QTY.	DESCRIPTION	PART NO.	QTY.	DESCRIPTION	PART NO.	QTY.	DESCRIPTION
959-12	1	SEAL RING	9511-12	1	SEAL RING						
264N	1	O-RING, COVER	452N	1	O-RING, COVER						
NO. RK6-910			REPAIR KIT Model 910 6"			NO. RK10-910			REPAIR KIT Model 910 10"		
PART NO.	QTY.	DESCRIPTION	PART NO.	QTY.	DESCRIPTION	PART NO.	QTY.	DESCRIPTION	PART NO.	QTY.	DESCRIPTION
9510-12	1	SEAL RING	9512-12	1	SEAL RING						
374N	1	O-RING, COVER	457N	1	O-RING, COVER						

NOTE: Model 910 Repair Kits are used for Model 910DA Single Check Detector Assemblies.

## INDIVIDUAL PARTS

ITEM NO.	DESCRIPTION	4"	6"	8"	10"
1	BOLT, COVER	959-11	9510-11	9511-11	9512-11
2	COVER	959-3C	9510-3C	9511-3C	9512-3C
3	O-RING, COVER	264N	374N	452N	457N
4	SEAL RING	959-12	9510-12	9511-12	9512-12
5	RETAINING PLATE	959-14-010F	9510-14-010F	9511-14-010F	9512-14-010F
6	NUT, STEM	959-9	9511-9	9511-9	9512-9
7	BOLT, SEAT	959-11B	959-11B	959-11B	959-11B
8	SEAT	959-18-010F	9510-18-010F	9511-18-010F	9512-18-010F
9	O-RING, SEAT	252N	366N	374N	379N
10	POPPET ASSY.	959-300	9510-300	9511-300	9512-300
11	UPPER STEM GUIDE	957-2	9510-2	9511-2A	9512-2A
12	LOWER STEM GUIDE	959-2	957-2	9511-2	9512-2
13	PLUG	558-7	5510-7	5510-7	5510-7



American Backflow Specialties

[www.americanbackflow.com](http://www.americanbackflow.com)

(800) 66-BKFLO

(619) 527-2525

Fax: (619) 527-2527