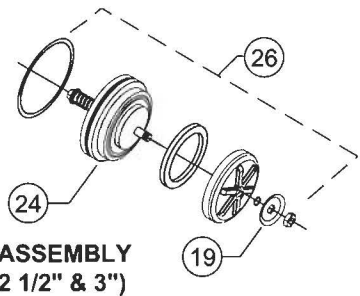


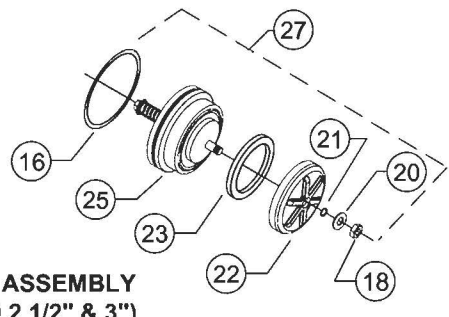
REPAIR KITS & PARTS - MODEL 350/450 2-1/2" & 3"

#RK212-350		REPAIR KITS
PART NO.	QTY.	DESCRIPTION
3507-12	2	SEAL RING
245N	2	O-RING
111N	2	O-RING

Capacity thru Schedule 40 Pipe (GPM) (350/450)				
Pipe size	5 ft/sec	7.5 ft/sec	10 ft/sec	15 ft/sec
2 1/2"	75	112	149	224
3"	115	173	230	346
4"	198	298	397	595
6"	450	675	900	1351
8"	780	1169	1559	2339
10"	1229	1843	2458	3687

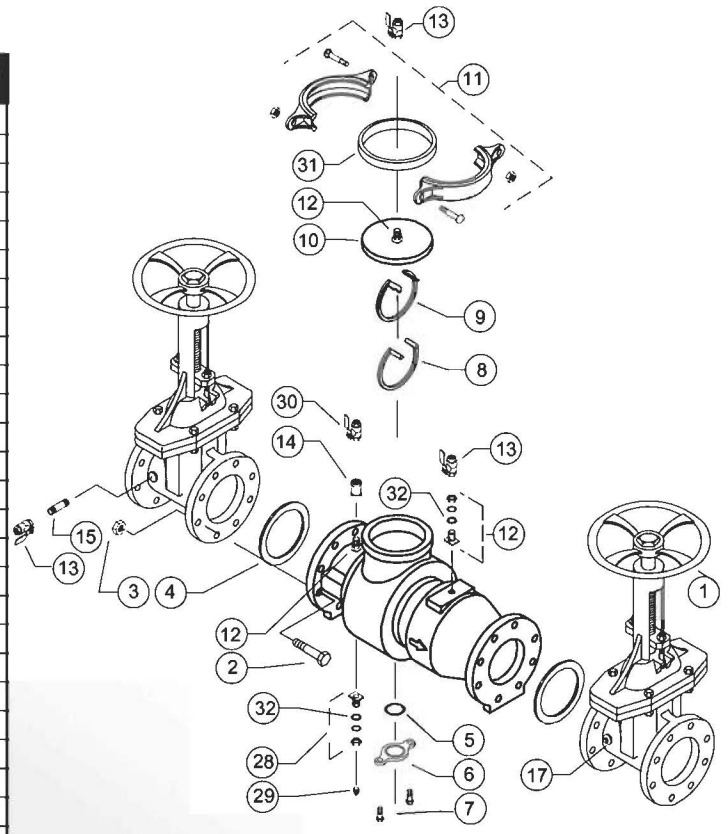


#1 CHECK ASSEMBLY
(350 & 450 2 1/2" & 3")



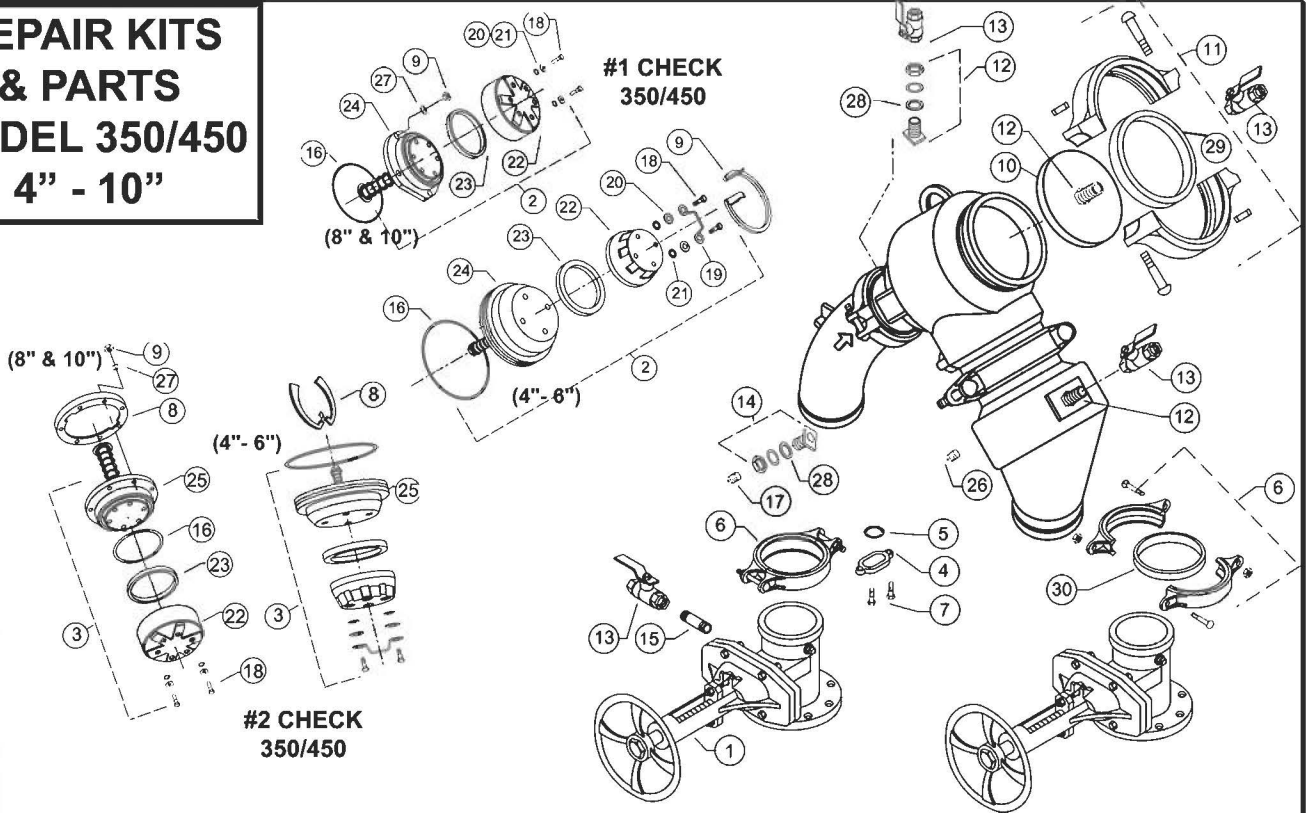
#2 CHECK ASSEMBLY
(350 & 450 2 1/2" & 3")

NO.	DESCRIPTION	(350 & 450) 2-1/2"	(350 & 450) 3"
1	GATE VALVE, NRS	212-48	3-48
	GATE VALVE, OS&Y	212-48OSY	3-48OSY
	GATE VALVE, OS&Y (FXG)	212-48OSYGXF	3-48OSYGXF
2	BOLT, FLANGE	558-11D	558-11D
3	NUT, FLANGE	558-9	558-9
4	GASKET, FLANGE	557-13	558-13
5	O-RING, COVER PLATE	031N	031N
6	COVER PLATE	558-3A-020F	558-3A-020F
7	BOLT, COVER PLATE	554-11A	554-11A
8	SEAT RETAINER #2	3507-14G	3507-14G
9	SEAT RETAINER #1	3507-14F	3507-14F
10	COVER	3507-3C	3507-3C
11	COVER RETAINER ASSY	5-23	5-23
12	BULKHEAD FITTING ASSY	BHF1C-100	BHF1C-100
13	BALL VALVE	12-850	12-850
14	COUPLING	12-51	12-51
15	NIPPLE, LONG	558-21B	558-21B
16	O-RING	245N	245N
17	PLUG	558-7	558-7
18	NUT, BOLT, POPPET RETAINER	3507-9	3507-9
19	HANDLE, #1 POPPET ASSY	3507-14E	3507-14E
20	WASHER	3507-14D	3507-14D
21	O-RING	111N	111N
22	POPPET RETAINER	3507-14	3507-14
23	SEAL RING	3507-12	3507-12
24	SEAT ASSEMBLY, #1 POPPET	3507-180	3507-180
25	SEAT ASSEMBLY, #2 POPPET	3507-180A	3507-180A
26	#1 CHECK ASSEMBLY	3507-300	3507-300
27	#2 CHECK ASSEMBLY	3507-300A	3507-300A
28	BULKHEAD FITTING ASSY	BHF1B-100	BHF1B-100
29	PLUG	558-7	558-7
30	BALL VALVE	12-850M	12-850M
31	GASKET, COVER RETAINER	5-23-13	5-23-13
32	BULKHEAD FITTING GASKET	BHF1-13	BHF1-13



MODEL 350/450 (2-1/2" - 3")

REPAIR KITS & PARTS MODEL 350/450 4" - 10"



#RK4-350 4" REPAIR KIT

PART NO.	QTY.	DESCRIPTION
3509-12	2	SEAL RING
353N	2	O-RING
109N	8	O-RING

#RK6-350 6" REPAIR KIT

PART NO.	QTY.	DESCRIPTION
3510-12	2	SEAL RING
364N	2	O-RING
204N	8	O-RING

#RK6-350 8" & 10" REPAIR KIT

PART NO.	QTY.	DESCRIPTION
3511-12	2	SEAL RING
273N	2	O-RING
204N	12	O-RING

NO.	DESCRIPTION	4"	6"	8"	10"
1	GATE VALVE, NRS (GXF)	4-48GXF	6-48GXF	8-48GXF	10-48OSY
	GATE VALVE, OS&Y (GXF)	4-48OSYGXF	6-48OSYGXF	8-48OSYGXF	10-48OSYGXF
	GATE VALVE, OS&Y (GXG)	4-48OSYG	6-48OSYG	8-48OSYG	10-48OSYG
	GATE VALVE, NRS (GXG)	4-48G	6-48G	8-48G	10-48G
2	#1 CHECK ASSEMBLY	3509-300A	3510-300A	3512-300A	3512-300A
3	#2 CHECK ASSEMBLY	3509-300A	3510-300B	3512-300B	3512-300B
4	COVER PLATE	4507-3A-010F	4507-3A-010F	511-3A-010F	511-3A-010F
5	O-RING, COVER PLATE	032N	032N	142N	142N
6	GROOVED COUPLING	4-23	6-23	8-23	10-23
7	BOLT, COVER PLATE	554-11A	554-11A	957-11	957-11
8	SEAT RETAINER ASSEMBLY #2	3509-140	3510-140	3511-14DSS	3511-14DSS
9	SEAT RETAINER #1	3509-14B	3510-14B	3511-9 (NUT)	3511-9 (NUT)
10	COVER	3509-3C	3510-3C	3511-3C	3511-3C
11	COVER RETAINER ASSEMBLY	6-23	8-23	12-23	12-23
12	BULKHEAD FITTING ASSEMBLY	BHF1C-100	BHF2B-100	BHF2B-100	BHF2B-100
13	BALL VALVE	12-850	34-850	34-850	34-850
14	BULKHEAD FITTING ASSEMBLY	BHF1B-100	BHF1B-100	BHF2C-100	BHF2C-100
15	NIPPLE, LONG	12X2-21B	5510-21B	5510-21B	5510-21B
16	O-RING	353N	364N	273N	273N
17	PLUG	558-7	558-7	558-7	558-7
18	BOLT, POPPET RETAINER	558-11E	5510-11A	3511-11	3511-11
19	HANDLE, #1 POPPET ASSEMBLY	3509-6	3510-6	N/A	N/A
20	WASHER	3509-14C	3510-14C	3510-14C	3510-14C
21	O-RING	109N	204N	204N	204N
22	POPPET RETAINER	3509-14	3510-14	3511-14	3511-14
23	SEAL RING	3509-12	3510-12	3511-12	3511-12
24	SEAT ASSEMBLY, #1 POPPET	3509-180	3510-180	3512-180A	3512-180A
25	SEAT ASSEMBLY, #2 POPPET	3509-180	3510-180	3512-180B	3512-180B
26	PLUG/CAP	558-7	34-3B	558-7	558-7
27	WASHER	N/A	N/A	3511-14E	3510-14C
28	GASKET	BHF1-13	BHF1-13	BHF1-13	BHF1-13
29	GASKET, COVER RETAINER	6-23-13	8-23-13	12-23-13	12-23-13
30	GASKET, GROOVED COUPLING	4-23-13	6-23-13	8-23-13	10-23-13