

# MODEL 500XL

1/2", 3/4", 1"

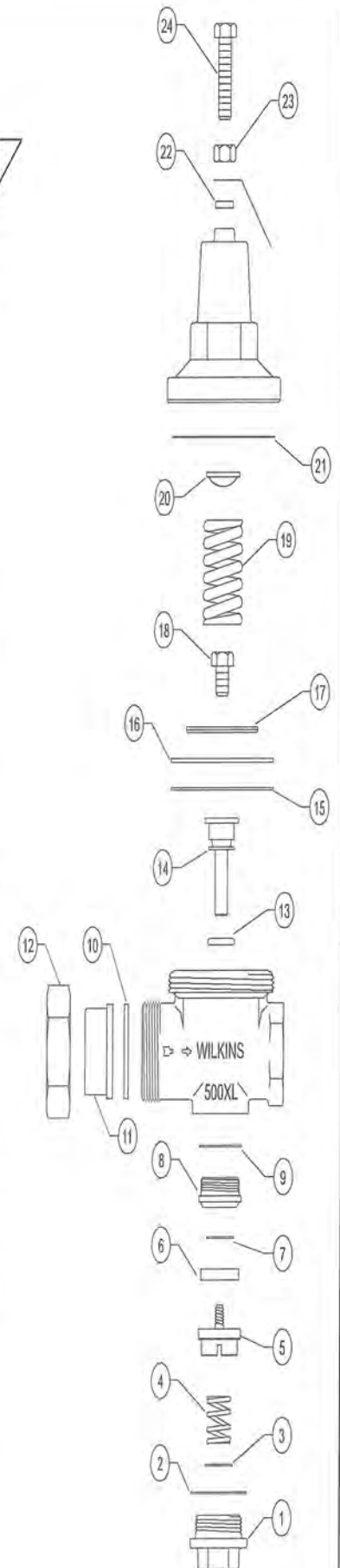
LEAD-FREE\*



\*This product contains a weighted average lead content less than 0.25% for wetted surfaces.

ITEM NO.	DESCRIPTION	1/2"	3/4"	1"	500XL	500XL-LPC	500XL-LPV	500XL-LHT	500XL-HR	500XL-HLR	500XL-SC	500XL-SW	510XL
1	MAIN CAP	501-3XL-010F	602-3XL	603-3AXL-010F	•	•	•	•	•	•	•	•	•
2	CAP WASHER	501A-12	503A-13	603A-12A	•	•	•	•	•	•	•	•	•
3	WASHER	—	—	204-14A	•	•	•	•	•	•	•	•	•
4	SPRING	602-33LPVS	602-33LPVS	602-33LPVS	•	•	•	•	•	•	•	•	•
5	PLUNGER	602-34XL	602-34XL	603-34XL	•	•	•	•	•	•	•	•	•
	PLUNGER	602-34XLLP	602-34XLLP	603-34XLLP	•	•	•	•	•	•	•	•	•
	PLUNGER	612-34XL,604C-12, 602B-11	612-34XL,604C-12, 602B-11	613-34XL,604C-12, 602B-11	•	•	•	•	•	•	•	•	•
	PLUNGER	602-34XLCH	602-34XLCH	603-34XLCH	•	•	•	•	•	•	•	•	•
6	SEAT WASHER	502-12	502-12	603-12A	•	•	•	•	•	•	•	•	•
7	WASHER	601-14	502-14	62-14	•	•	•	•	•	•	•	•	•
8	SEAT	601-18	602-18	603-18	•	•	•	•	•	•	•	•	•
9	SEAT GASKET	501A-13	502A-13	603A-13	•	•	•	•	•	•	•	•	•
10	UNION GASKET	601-13	62-13	63-13	•	•	•	•	•	•	•	•	•
11	TAILPIECE NPT (FEMALE)	601-19XL	602-19XL	63-19XL	•	•	•	•	•	•	•	•	•
	TAILPIECE NPT (MALE)	—	602M-19XL	63M-19XL	•	•	•	•	•	•	•	•	•
	TAILPIECE COPPER (FEM)	—	602C-19	63C-19	•	•	•	•	•	•	•	•	•
	TAILPIECE COPPER (MALE)	—	602CM-19XL	63CM-19XL	•	•	•	•	•	•	•	•	•
12	UNION NUT	601-9-010F	62-9-010F	63-9-010F	•	•	•	•	•	•	•	•	•
13	O-RING	011N	WK-111N	113N	•	•	•	•	•	•	•	•	•
	O-RING	011N	113N	113N	•	•	•	•	•	•	•	•	•
14	STEM	501-5XL	602-5XL	603-5XL	•	•	•	•	•	•	•	•	•
	STEM	501-5XL	602-5XLLP	603-5XL	•	•	•	•	•	•	•	•	•
	STEM	501-5XLCH	602-5XLCH	603-5XLCH	•	•	•	•	•	•	•	•	•
15	TEFLON DIAPHRAGM	62-43HT	62-43HT	503-43HT	•	•	•	•	•	•	•	•	•
16	DIAPHRAGM	501-43	501-43	503-43	•	•	•	•	•	•	•	•	•
	DIAPHRAGM	511-43	511-43	513-43	•	•	•	•	•	•	•	•	•
17	DIAPHRAGM DISC	602-80	602-80	603-80	•	•	•	•	•	•	•	•	•
18	BOLT / NUT	501B-9	501B-9	503-11	•	•	•	•	•	•	•	•	•
	BOLT / NUT	501B-9	503-11	503-11	•	•	•	•	•	•	•	•	•
	BOLT / NUT	501B-9SS	501B-9SS	503-11BR	•	•	•	•	•	•	•	•	•
19	SPRING	62-33	62-33	603-33	•	•	•	•	•	•	•	•	•
	SPRING	601-33HR	601-33HR	503-33HR	•	•	•	•	•	•	•	•	•
20	SPRING DISC	602A-80	602A-80	602A-80	•	•	•	•	•	•	•	•	•
21	FRICITION RING	602B-12	602B-12	603B-12	•	•	•	•	•	•	•	•	•
22	WASHER	606C-12	606C-12	606C-12	•	•	•	•	•	•	•	•	•
23	LOCKNUT	501B-9	501B-9	501B-9	•	•	•	•	•	•	•	•	•
	LOCKNUT SS	501B-9SS	501B-9SS	501B-9SS	•	•	•	•	•	•	•	•	•
24	ADJUSTMENT BOLT	602A-11A	602A-11A	602A-11A	•	•	•	•	•	•	•	•	•
	ADJUSTMENT BOLT	602A-11A	602A-11A	603A-11AHR	•	•	•	•	•	•	•	•	•
	ADJUSTMENT BOLT SS	602A-11ASS	602A-11ASS	602A-11ASS	•	•	•	•	•	•	•	•	•

• Item included in specified Model



★ REPAIR KIT ITEMS (ALL ★ ITEMS IN KIT)

# MODEL 500XL

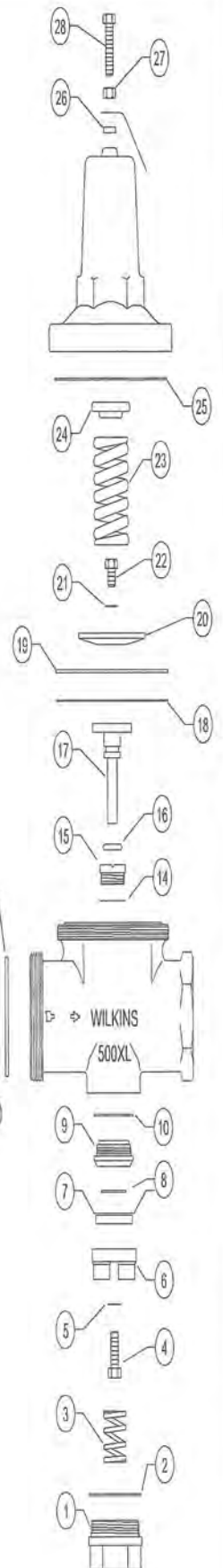
1-1/4", 1-1/2", 2", 2-1/2", 3" LEAD-FREE\*



\*This product contains a weighted average lead content less than 0.25% for wetted surfaces.

ITEM NO.	DESCRIPTION	1-1/4"	1-1/2"	2"	2-1/2"	3"	500XL	500XLPC	500XLPV	500XLPT	500XLHR	500XLHR	500XLSC	500XLSW	510XL
1	MAIN CAP	604-3XL-010F	604-3XL-010F	606-3XL-010F	507-3XL-010F	508-3XL-010F	●	●	●	●	●	●	●	●	●
2	CAP WASHER	604A-12	604A-12	606A-12	507A-12	508A-12	●	●	●	●	●	●	●	●	●
3	SPRING	604-33LPVS	605-33LPVS	606-33LPVS	507-33LPVS	508-33LPVS	●	●	●	●	●	●	●	●	●
4	BOLT	604B-11	606B-11	606B-11	606B-11	959-11	●	●	●	●	●	●	●	●	●
5	WASHER	604C-12	606C-12	606C-12	606C-12	508C-12	●	●	●	●	●	●	●	●	●
6	PLUNGER	604-34XL	605-34XL-010F	606-34XL-010F	507-34XL-010F	508-34XL-010F	●	●	●	●	●	●	●	●	●
	PLUNGER	604-34XLCH	605-34XLCH	606-34XLCH	507-34XLCH	508-34XLCH	●	●	●	●	●	●	●	●	●
7	SEAT WASHER	604-12	605-12	606-12	507-12	508-12	●	●	●	●	●	●	●	●	●
8	WASHER	504-14	505-14	606-14	507-14	508-14	●	●	●	●	●	●	●	●	●
9	SEAT	604-18	605-18	606-18	507-18	508-18	●	●	●	●	●	●	●	●	●
10	SEAT GASKET	504A-13	505A-13	506A-13	507A-13	508A-13	●	●	●	●	●	●	●	●	●
11	UNION GASKET	604-13	605-13	606-13	—	—	●	●	●	●	●	●	●	●	●
12	TAILPIECE NPT (FEM)	604-19XL-010F	605-19XL-010F	606-19XL-010F	—	—	●	●	●	●	●	●	●	●	●
	TAILPIECE COPPER (FEM)	604C-19	605C-19	606C-19	—	—	●	●	●	●	●	●	●	●	●
13	UNION NUT	604-9-010F	605-9-010F	606-9-010F	—	—	●	●	●	●	●	●	●	●	●
14	GASKET	—	—	—	—	508A-13	●	●	●	●	●	●	●	●	●
15	SLEEVE	—	—	—	—	508-2XL-010F	●	●	●	●	●	●	●	●	●
16	O-RING	110N	115N	115N	222N	333N	●	●	●	●	●	●	●	●	●
17	STEM	604-5XL	606-5XL-010F	606-5XL-010F	507-5BXL-010F	508-5XL-010F	●	●	●	●	●	●	●	●	●
	STEM	604-5XLCH	606-5XLCH	606-5XLCH	507-5BXLCH	508-5XLCH	●	●	●	●	●	●	●	●	●
18	TEFLON DIAPHRAGM	504-43HT	505-43HT	606-43HT	507-43HT	507-43HT	●	●	●	●	●	●	●	●	●
19	DIAPHRAGM	504-43	505-43	606-43	507-43	507-43	●	●	●	●	●	●	●	●	●
	DIAPHRAGM	514-43	515-43	606-43	507-43	507-43	●	●	●	●	●	●	●	●	●
20	DIAPHRAGM DISC	604-80	505-80BR	505-80BR	505-80BR	505-80BR	●	●	●	●	●	●	●	●	●
21	WASHER	—	605A-14	—	—	—	●	●	●	●	●	●	●	●	●
22	BOLT	503-11	505-11	505-11	505-11	505-11	●	●	●	●	●	●	●	●	●
	BOLT	503-11BR	3004B-11	3004B-11	3004B-11	3004B-11	●	●	●	●	●	●	●	●	●
23	SPRING	604-33	605-33B	606-33	507-33B	507-33B	●	●	●	●	●	●	●	●	●
	SPRING	1005-33	605-33HR	606-33HR	507-33HR	507-33HR	●	●	●	●	●	●	●	●	●
24	SPRING DISC	602A-80	505A-80	505A-80	505A-80	505A-80	●	●	●	●	●	●	●	●	●
	SPRING DISC	604A-80	604A-80	505A-80	—	—	●	●	●	●	●	●	●	●	●
	SPRING DISC	602A-80	505A-80BR	505A-80BR	505A-80BR	505A-80BR	●	●	●	●	●	●	●	●	●
	SPRING DISC	—	—	507A-80	507A-80	507A-80	●	●	●	●	●	●	●	●	●
25	FRICITION RING	604B-12	505B-12	—	—	—	●	●	●	●	●	●	●	●	●
26	WASHER	606C-12	508C-12	508C-12	508C-12	508C-12	●	●	●	●	●	●	●	●	●
27	LOCKNUT	501B-9	505B-9A	505B-9A	505B-9A	505B-9A	●	●	●	●	●	●	●	●	●
	LOCKNUT SS	501B-9SS	505B-9ASS	505B-9ASS	505B-9ASS	505B-9ASS	●	●	●	●	●	●	●	●	●
28	ADJUSTMENT BOLT	62A-11	605A-11A	605A-11A	507A-11A	507A-11A	●	●	●	●	●	●	●	●	●
	ADJUSTMENT BOLT	62A-11SS	605A-11ASS	507A-11	507A-11	507A-11	●	●	●	●	●	●	●	●	●

● Item included in specified Model



★ REPAIR KIT ITEMS (ALL ★ ITEMS IN KIT)